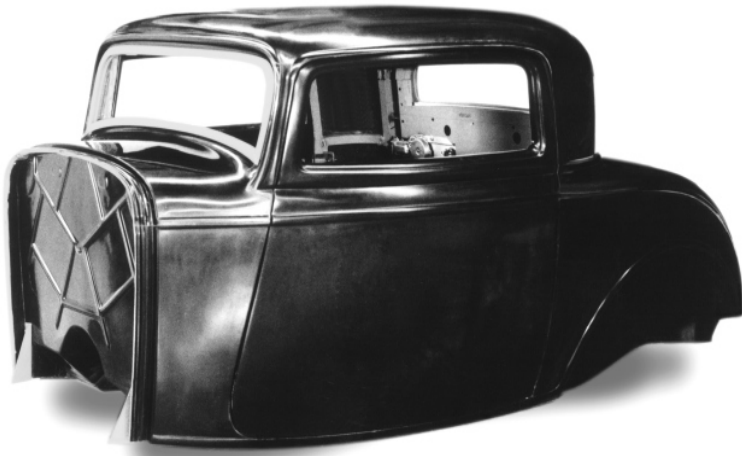


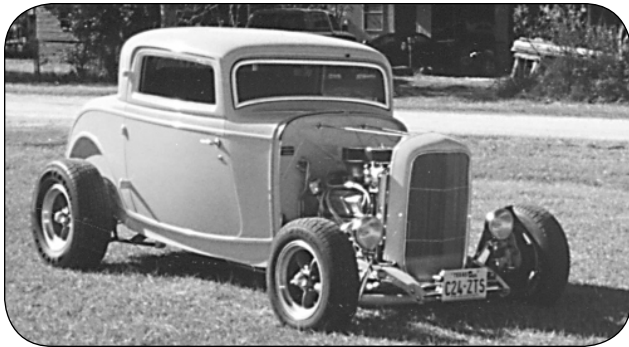
1932 3 Window Coupe Body



- **Stock or Chopped**
 - Stock Height available
 - Chop version 2-1/2" front - 2" back
 - Filled Roof
- **Windshield**
 - Available tuned for swing out frame
 - Available tuned for glue in glass
 - Working Vent or Filled Cowl
 - Under dash doubles as defroster plenum

32
Body
By
Wescott

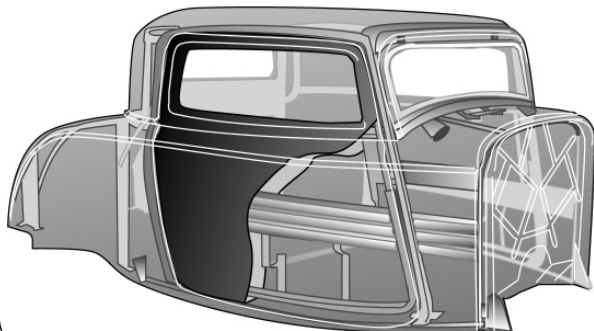
- **Outside or Hidden Door Hinges**
 - Inside handle mounts installed
 - Bear jaw latches
 - Outside handle mounts/key lock optional
 - Outside hinges include check straps
 - Hidden hinges open 90 degrees, no droop
 - Power or manual windows available



Built-in internal steel reinforcing for safety & strength

Cross-bracing of cowl and quarter panels, plus solid hinge mounts, creates exceptional rigidity and door alignment.

Seat belt and shoulder harness mounts



Street Rod
Equipment Alliance
of SEMA
1993

Critical mount points supported by steel:

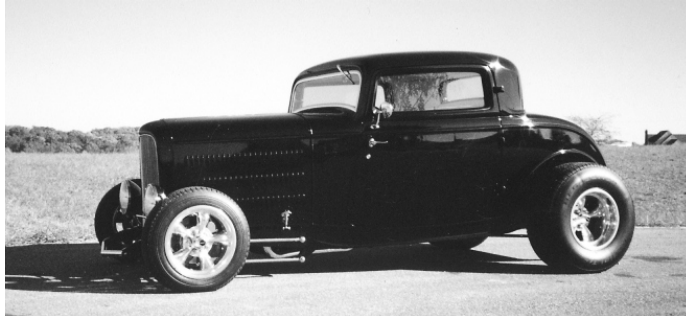
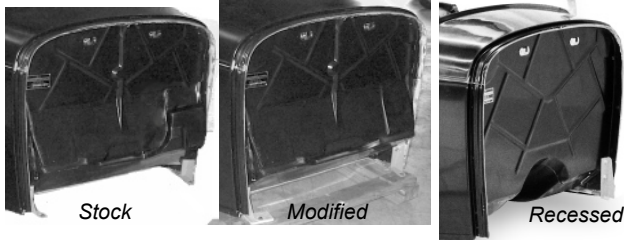
- Door hinge mounts
- Deck lid hinge mounts
- Door latch mounts
- Wiper motor mounts
- Door handle mounts
- Steering column mount

Fabricated box tubing "cage" completely surrounds cockpit. Steel reinforcing is installed between fiberglass inner and outer door and deck lid panels



1932 3 Window Coupe Body

• Firewall Options

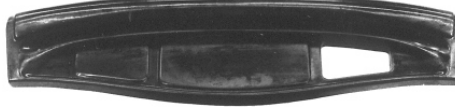


• Dash Options

Stock Style
with opening glove
box lid



Filled Center,
Raised panels,
with opening glove
box lid



Filled Center,
no glove box lid,
raised panels



Flat,
no glove box lid



Prices

1932 3 Window Coupe

base price:

29500.00

Options

A Firewall	Stock, Recessed, or modified	std.
C Deck Lid	Trunk or Rumble	std.
D Dash	Stock w/glove box lid	call
	Filled center w/glove box lid	call
	Filled center and side	std
	Smooth	std
E Cowl Top	Filled	std.
	Working Vent	call
F Door hinge	Stock or hidden	std.
L Door outside handle	no linkage	std.
	Linkage and key lock	call
J Top	Stock height or chopped	std
K Windshield	Tuned for frame or for glue in	std
M Back body	Dimple for fuel neck or filled	std.

upcharge:

Fiberglass fender package:

Front fenders, rear fenders, front splash apron frame horn covers.	call
Grille Shell	call

Windows

Operating windows Include tempered glass, regulators, and felt, fixed windows include glass only, not installed
Specify clear, light grey, or light green tint

Doors	Power operated	call
Doors	Manual operated	call
Back window	Power operated	call
Back window	Manual operated	call
Back window	Fixed, glass only	call

Power Windshield Wipers installed:

Heavy duty "Specialty Power Windows" system	call
Dual wipers under header, cable drive motor mounts in cowl	

• Trunk Lid Installed

- Inner and outer panels like original
- Custom improved hinges
- Outside handle or remote latch
- Drip rails like original



* Parts with price listed as "not.avbl" are not known to be available at this time, but are listed for reference.