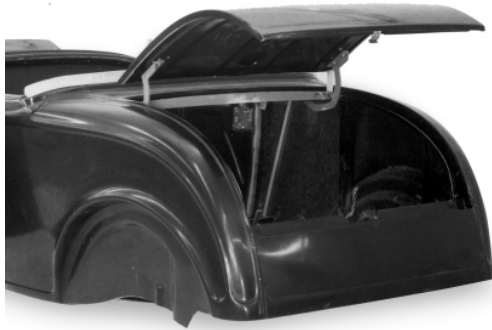


1932 Roadster and Phaeton Bodies



- **Fiberglass body**
 - Original body lines retained
 - Steel reinforced
 - Hand laminated fiberglass
- **Doors installed with latches**
 - Inner and outer panels like original
 - Bear jaw style latches
uses stock 1932 door handles
 - Stock or hidden hinges
- **Working vent or filled cowl**
 - Working vent available
 - Filled cowl with or without windshield reveal



- **Cockpit tack wood**
 - Optional on roadster
 - Installed in phaeton
- **Phaeton Back Seat**
 - Platform is part of steel structure
- **Top Mount**
 - Top mount on roadster optionally installed
 - Top studs on phaeton included



- **Roadster Deck Lid Installed**

- Inner and outer panels like original
- Custom improved hinges
- Outside handle or remote latch
- Drip rails like original

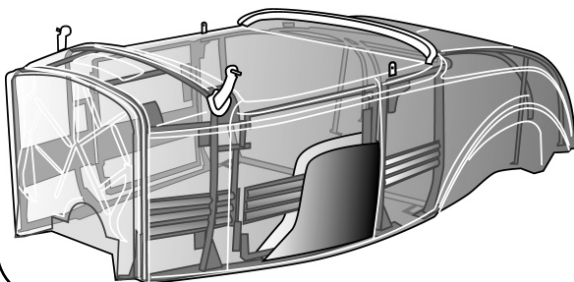
- **Front Seat**

- Front riser not included
- Custom seats can easily be used
- Phaeton seat back stock or 3" set back



Built-in internal steel reinforcing for safety & strength

Cross-bracing of cowl and quarter panels, plus solid hinge mounts, creates exceptional rigidity and door alignment control



Fabricated box tubing "cage" completely surrounds cockpit

Critical mount points supported by steel:

- Door hinge mounts
- Deck lid hinge mounts
- Door latch mounts
- Windshield post mounts
- Door handle mount tabs
- Top iron mount
- Door check strap mounts

Steel reinforcing is installed between fiberglass inner and outer door and deck lid panels



- Anchor points for steering column

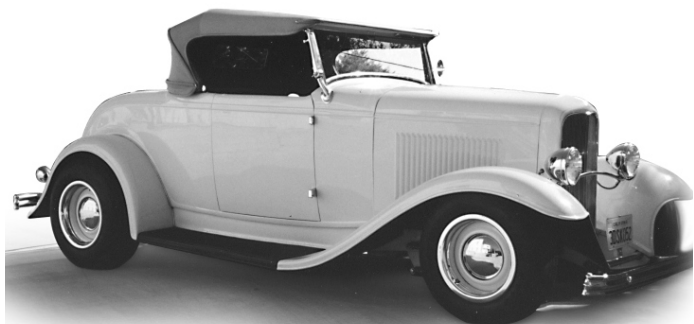
* Parts with price listed as "not.avbl" are not known to be available at this time, but are listed for reference.

19701 SE Highway 212
Damascus, OR 97089

2024 Catalog
Prices and descriptions subject to change

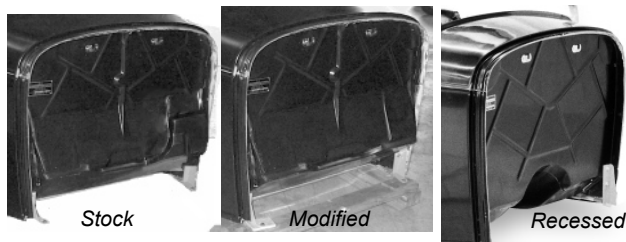
1-800-523-6279
www.wescottsauto.com

1932 Roadster and Phaeton Bodies



built by Dean Freeman, Lemon Grove, CA

• Firewall Options



• Dash Options



Prices

| | |
|---|--------------------------------|
| 1932 Roadster | base price: 15000.00 |
| <i>does not include tack wood or windshield posts</i> | |
| 1932 Phaeton | 19500.00 |
| <i>does not include windshield posts</i> | |

Options

| | upcharge: |
|------------------------|--|
| A Firewall | Stock, Recessed, or modified <i>std.</i> |
| B Phaeton Front Seat | Stock or 3" setback <i>std.</i> |
| C Roadster Deck Lid | Trunk or Rumble <i>std.</i> |
| D Dash | Stock, filled, Auburn, '32 <i>std.</i> |
| | 1940 w/glove box <i>call</i> |
| E Cowl Top | Filled (uses stock windshield) <i>std.</i> |
| | Filled (no windshield reveal) <i>std.</i> |
| | Working Vent <i>call</i> |
| F Door hinge | Stock or hidden <i>std.</i> |
| G. Deck latch | Stock or remote <i>std.</i> |
| H Phaeton wheelwell | Stock (use sedan fender) <i>std.</i> |
| | Mini-tub (coupe fender) <i>call</i> |
| L Door outside handle | no linkage <i>std.</i> |
| | Linkage installed (roadster) <i>call</i> |
| | Linkage installed (phaeton) <i>call</i> |
| N Windshield Posts | not included <i>std.</i> |
| | USA top quality bronze <i>call</i> |
| | USA top quality chrome <i>call</i> |
| O Cockpit (roadster) | Filled wood mount <i>std.</i> |
| | Tack wood installed <i>call</i> |
| P Top mount (roadster) | installed or filled <i>std.</i> |

Fiberglass fender package:

| | |
|---|-------------|
| Front fenders, rear fenders, front splash apron frame horn covers. | <i>call</i> |
| Grille Shell | <i>call</i> |

*32 Hiboy
Andy Brizio
Concord, Ca*



*'32 Phaeton
Rick Saam*