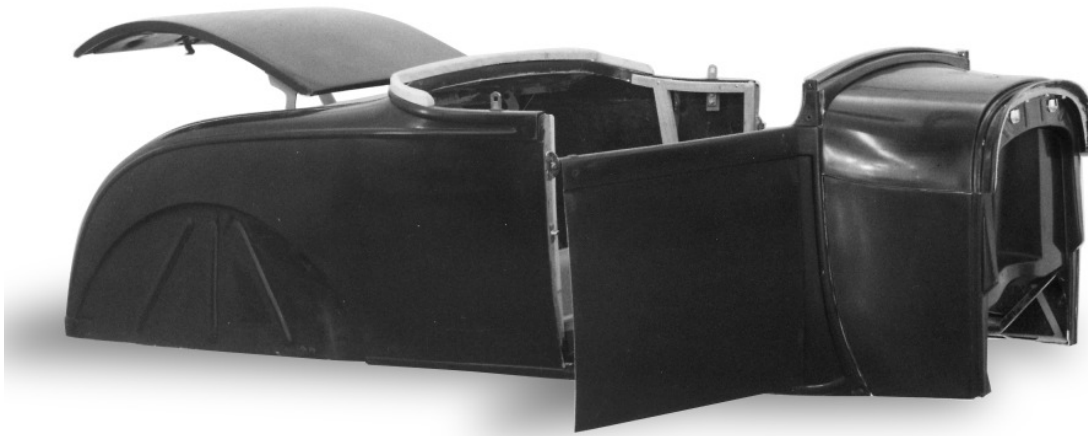


# 1928-29 Roadster, Phaeton & Roadster PU Bodies



## Wescott Quality Fiberglass, Steel Reinforced

The Wescott Model A roadsters, phaetons and roadster pickup bodies are the finest reproduction bodies available. All the original body lines have been retained. All doors and deck lid come installed, and open and close solidly.

Wescott uses high quality, hand laminated fiberglass and extensive steel reinforcement to make a strong, straight and clean fitting body.

## Door Outside or Hidden Hinges, Door 1928 Style or 1929 Style Latch

The doors are fitted and mounted to the body with hinges, latches, striker plates, dovetails and dovetail sockets installed. Tabs for mounting outside door handles and door check straps are provided on the steel structures installed in the doors. Stock style or hidden hinges are available. Wescott hidden hinges are specially designed for our Model A Roadster and Phaeton bodies and only protrude minimally (about 1/4") inside of the door posts. 1928 style (inside handle only) or 1929 (uses outside and inside handle) door latches are available.

## Dash

### 4 Dash Panel Options

A removable fiberglass dash panel is installed in the body. The following styles are available:

Stock



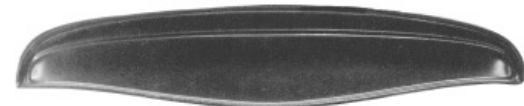
Filled



Auburn  
Style



1932  
Style



## Built-in internal steel for safety & strength

Cross-bracing of cowl and quarter panels, plus solid hinge mounts, creates exceptional rigidity and door alignment control

Fabricated box tubing "cage" completely surrounds cockpit

Doors & deck lid are constructed with two fiberglass panels encasing an inner steel framework

Hardware mounts provided on steel framework to protect stress areas:

- Door hinge mounts
- Door latch mounts
- Door handle mount tabs
- Door check strap mounts
- Trunk or Rumble hinge mounts
- Windshield post mounts
- Top mount bosses on steel frame





**Cowl**

**Filled Cowl, Dummy Fill Neck, or Working Vent**

Wescott Model A bodies are available with a molded smooth cowl top, a cowl top with dummy filler neck, or (at extra cost) a cowl vent. The cowl vent is fully working with the hinge, adjustment ratchet, and tension spring installed and the drip channel around the vent opening.

**Deck Lid (Roadster)**

**Rumble or Trunk Lid**

**Stock or Remote Latch**

On the Roadster, the deck lid is fitted and mounted to the body with the hinges, latch, striker, and rubber bumpers installed. The body can be ordered with the deck lid hinged as a rumble lid or as a trunk lid. A stock style (for use with outside handle) or remote operated type deck latch is installed. The remote latch does not include operating cables or linkage. Trunk hinges are a Wescott's designed high lift style for ease of opening and adjustment. All drip channels are installed on the body around the deck lid opening.

**Firewall**

**Stock or Recessed Firewall**

Wescott firewalls are molded using a fire retardant resin. The recessed firewall is a minimum recess design for small block Chevy V8's, with a 1 1/2" recess on the left side, 2 1/2" on the right side, and 4" in the center. This will leave more legroom than any other recessed firewall and still allow a HEI distributor to be used. The stock firewall looks like an original and will work with most 4 cylinder and V6 engines. Radiator rod mounting brackets are installed to the upper firewall.



# 1928-29 Roadster, Phaeton & Roadster PU Bodies, cont

## Seat (Roadster)

The roadster body does not include the front seat platform or riser. If original type seats are to be used order separately the seat platform (A-121-A), back stiffener (A-121-ABR), and riser (A-123-A). These can be installed set back approximately 2" for extra leg room when a recessed firewall is used. All upholstery tack wood is installed in the body.

## 32 Style Hiboy Floor (Roadster)

Stock Floor or 32 Hiboy Floor Options

The 1929 Roadster body is available as a Hiboy version with a special floor pan to fit a 1932 frame. Specify stock kickup at the cowl or flat from front to rear kickup.

## Seat (Phaeton)

Front Seat Back Stock or Set Back 3"

On the Phaeton, the front seat back is installed and is available with stock setback or with a 3" extra setback. We recommend the seat set back for extra leg room, especially with the recessed firewall. The front seat platform (A-121-A) is not included and can be ordered separately for an original type seat. All upholstery tack wood is installed in the body.

## Top Mount (Phaeton)

Top mount studs are included with the body but are not installed. Plates are installed in the steel reinforcing for mounting top studs and top rest saddle studs (not included with body.)

## Wheelwell (Phaeton)

Stock or Wide

The rear wheelwells on the phaeton are available stock or with a mini-wheel tub to fit the stock coupe rears owing extra tire room with a stock frame.



'29 Roadster Hiboy, Wescott Body  
Built by Ron Drezer  
American Rodder Photo

## Options and Pricing

1929 Roadster Body base 9000.00

**Please specify options when ordering.**

- A. Firewall: Stock style or Recessed std.
- C. Deck lid: Rumble or Trunk lid std.
- D. Dash: Stock, Filled, Auburn, or 32 std.
- E. Cowl: Filled, Dummy filler neck, or Working vent 250.00
- F. Door: Stock (outside) or Hidden hinges
- G. Deck latch: Stock or Remote style std.
- I. Floor: Stock or 29 on 32 Hiboy style std.
- L. Door latch: 1928 (inside handle) or 1929(uses in & outside handles) std.

1929 Phaeton Body base 11000.00

**Please specify options when ordering.**

- A. Firewall: Stock style or recessed std.
- B. Seat: Stock or 3" extra seat setback std.
- D. Dash: Stock, Filled, Auburn, or 32 std.
- E. Cowl: Filled, Dummy filler neck, or Working vent 250.00
- F. Door: Stock (outside) or Hidden hinges
- H. Wheelwell: Stock or Wide (use Coupe fenders)
- L. Door latch: 1928 (inside handle) or 1929(uses in & outside handles) std.

1929 Roadster Pickup Cab base 6000.00

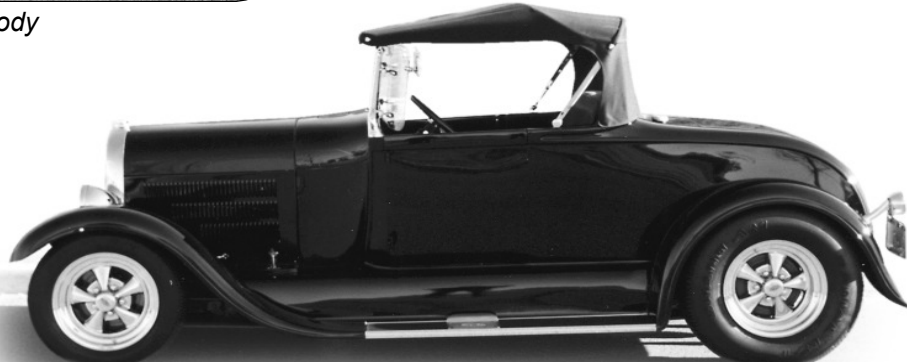
**Please specify options when ordering.**

- A. Firewall: Stock style or recessed std.
- D. Dash: Stock, Filled, Auburn, or 32 std.
- E. Cowl: Filled, Dummy filler neck, or Working vent 250.00
- F. Door hinge: Stock or Hidden hinges std.
- L. Door latch: 1928 (inside handle) or 1929(uses in & outside handles) std.

Model A Fender Package\* 1575.00

- 1 pr Front fenders (fiberglass)
- 1 pr Side splash aprons (fiberglass)
- 1 pr Rear fenders (fiberglass)

\* Package price applies if ordered with body.



'29 Roadster, Wescott Body  
Gary & Pat Sipe  
Liberty Lake. WA