

1930-31 Roadster, Phaeton & Roadster Pickup Bodies



Roadster

- **Fiberglass body**
 - Original body lines retained
 - Steel reinforced
 - Hand laminated fiberglass
- **Doors installed with latches**
 - Inner and outer panels like original
 - 1928 or 1931 latches available
 - Stock or hidden hinges
 - Dovetails installed
- **Cowl top removable**
 - "Filled" cowl top, or dummy gas neck
 - Working cowl vent available

- **Roadster Deck Lid Installed**

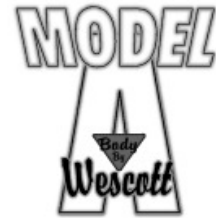
- Inner and outer panels like original
- Custom improved hinges
- Outside handle or remote latch
- Drip rails like original

- **Roadster stock floor**

- Original or street rod frame

- **Front Seat**

- Front riser not included
- Custom seats can easily be used
- Phaeton seat back stock or 3" set back



Roadster
Pickup Cab

- **Back Seat (phaeton)**
 - Platform is part of body structure
- **Upholstry Tack Wood**
 - Installed
- **Top Mount**
 - Top mount on roadster installed
 - Top studs on phaeton included



Phaeton

- **Phaeton rear tire wells:**

- Stock type... uses sedan fenders
- Mini Tub type... uses coupe fenders

Built-in internal steel reinforcing for safety & strength

Cross-bracing of cowl and quarter panels, plus solid hinge mounts, creates exceptional rigidity and door alignment control



Fabricated box tubing "cage" completely surrounds cockpit

Critical mount points supported by steel:

- Door hinge mounts
- Deck lid hinge mounts
- Door latch mounts
- Windshield post mounts
- Door handle mount tabs
- Top iron mount
- Door check strap mounts

Steel reinforcing is installed between fiberglass inner and outer door and deck lid panels



* Parts with price listed as "not.avbl" are not known to be available at this time, but are listed for reference.

1930-31 Roadster, Phaeton & Roadster Pickup Bodies



An early Wescott '31 Roadster built by Dee Wescott

• Firewall Options

- Stock style
- Cowl top removable



• Recessed for V8:

- Minimal recess design
- 1" left, 2" right, 4" center



• Dash Options

• Stock



• Filled



• Auburn
Style



• 1932
Style



Prices

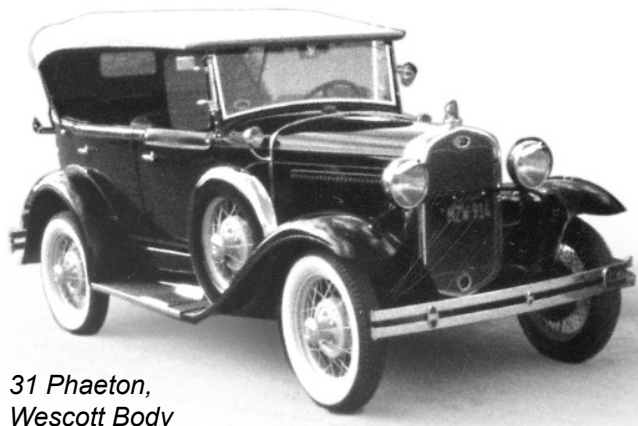
1931 Roadster	base price:	9500.00
1931 Phaeton		11500.00
1931 Roadster Pickup		5000.00

Options

A Firewall	Stock or Recessed	std.
B Phaeton Front Seat	Stock or 3" setback	std.
C Roadster Deck Lid	Trunk or Rumble	std.
D Dash	Stock, filled, Auburn, '32	std.
E Cowl Top	Filled or "dummy filler"	std.
	Working Vent	300.00
F Door hinge	Stock or hidden	std.
G Deck latch	Stock or remote	std.
H Phaeton wheelwell	Stock (use sedan fender)	std.
	Mini-tub (coupe fender)	200.00
L Door latch	1928 (inside handle only)	std.
	1930-31 (use outside handle)	std.

Fiberglass fender package:

Front fenders, rear fenders, side splash aprons	1750.00
---	---------



31 Phaeton,
Wescott Body
Built by Ted Dobbins



* Parts with price listed as "not.avbl" are not known to be available at this time, but are listed for reference.