

1932 Roadster & Phaeton bodies

Fits Original or Reproduction 1932 Frames



32
Body
By
Wescott

1932 Roadster Body
Recessed Firewall
Filled Cowl
Outside Hinge

Wescott Quality Fiberglass, Steel Reinforced

Wescott 1932 roadster and phaeton bodies are the finest reproduction bodies available. All the original body lines have been retained. All doors and, on the roadster, deck lid come installed, and open and close solidly.

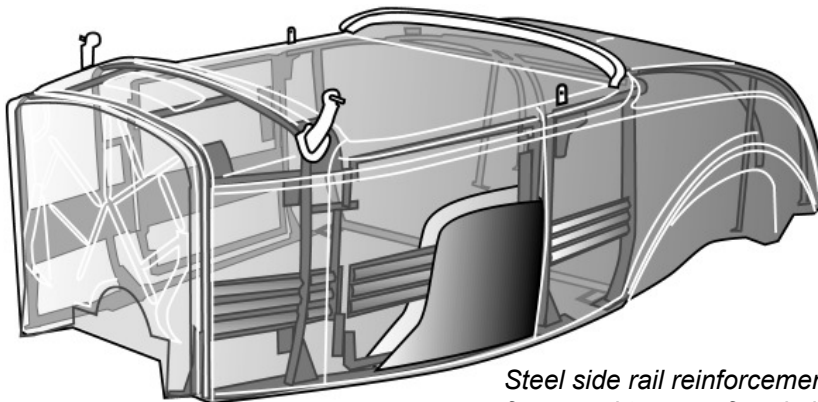
Wescott uses high quality, hand laminated fiberglass and extensive steel reinforcement to make a strong, straight and clean fitting body.

Cowl

Filled Cowl, Smooth Cowl or Working Cowl Vent Options are cowl top filled (keeping the stock windshield lip), molded smooth (no windshield lip), or (at extra cost) a working cowl vent. The optional cowl vent is fully working with the hinge, adjustment ratchet, and tension spring installed and the drip channel around the vent opening.

Lower windshield posts are included with the filled cowl or working cowl vent, not included with California Hiboy Special bodies or smooth cowl bodies.

Built-in internal steel for safety & strength



Steel side rail reinforcement
from cowl to rear of cockpit

Cross-bracing of cowl and quarter panels, plus solid hinge mounts, creates exceptional rigidity and door alignment control

Doors & deck lid are constructed with two fiberglass panels encasing an inner steel framework

Hardware mount tabs provided on steel framework to protect stress areas:

- Door hinge mounts
- Door latch mounts
- Door handle mount tabs
- Door check strap mounts
- Trunk or rumble hinge mounts
- Windshield post mounts
- Steering column mounts
- Seat belt mounts
- Top mount locations on steel frame
- Cowl light mounts
- Cowl vent hinge mounts





'32 Roadster, Wescott Body
Built by John Eder
Wenatchee, WA



'32 Roadster, Wescott Body
Built by Barry Lobeck
Street Rodder Photo

Doors

Outside Hinges or Hidden Hinges

Stock Type or Outside Door Handle

The doors are fitted and mounted to the body with hinges, modern single jaw latches, striker pins, and rubber bumpers installed. Sockets for side curtain rods and tabs for mounting inside and outside door handles are provided on the steel structures installed in the doors. Latches accept stock type inside handles and links.

Linkage for outside handle available at extra cost.

Stock style door hinges or hidden hinges are available.

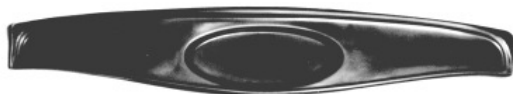
Wescott hidden hinges are specially designed for our 1932 Roadster and Phaeton bodies and only protrude minimally (about 1/4") inside of the door posts.

Dash

4 Dash Panel Options

A removable fiberglass dash panel is installed in the body. The following styles are available:

Stock



Filled



Auburn



*1940
with
opening
glove box*



Deck Lid (Roadster)

Rumble or Trunk Lid, Stock Type Latch or Remote

On the 1932 Roadster, the deck lid is fitted and mounted to the body with the hinges, latch, striker, and rubber bumpers installed. The body can be ordered with the deck lid hinged as a rumble lid or as a trunk lid. A stock style (for use with outside handle) or remote operated type deck latch is installed. The remote latch does not include operating cables or linkage. Trunk hinges are a Wescott's designed high lift style for ease of opening and adjustment. All drip channels are installed on the body around the deck lid opening.

Seat

Set Back Options for Roadster or Phaeton

The roadster body does not include the front seat platform or riser. If original type seats are to be used order separately the seat platform (B-121) and riser (B-123). These can be installed set back from the stock location approximately 2" for extra leg room when a recessed firewall is used. The rumble seat riser is installed if the rumble lid option is selected.

On the 1932 Phaeton, the front seat back is installed in the body. It is available in stock location or set back 3 inches. We recommend the seat set back for extra leg room, especially with the recessed firewall. The front seat platform (B-121) is not included and can be ordered separately if an original type seat is to be used.



1932 Roadster & Phaeton bodies, cont



Street Rodder Photo

'32 Phaeton, Wescott Body. Built by Rick Saam



A Classic '32 Phaeton. Wescott Body



1932 Phaeton Body
Recessed Firewall
Working Cowl Vent
Outside Hinges

Firewall

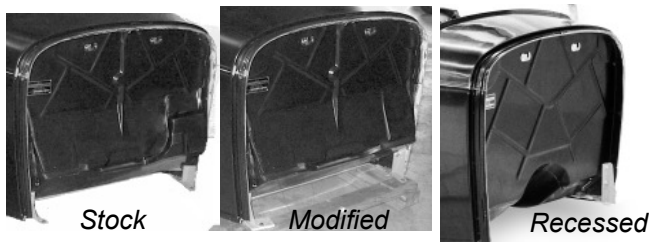
Stock, Recessed or Modified Stock Firewall

Wescott firewalls are molded using a fire retardant resin.

The stock firewall is recommended for most 4 cylinder, V6, and flathead V8 engines. A floorboard is not supplied.

The recessed flat style firewall is recommended for small block Ford or Chevy V8's. Big block V8's and small block V8's with blower drives have been successfully installed in cars with the recessed firewall. A fiberglass floorboard/ transmission cover is included.

The modified stock firewall (the bulge on the left side is removed) is recommended for maximum leg room on extended wheelbase cars or when custom locating of the engine is warranted. A floorboard is not supplied.



Stock

Modified

Recessed

Other Features:

The roadster body includes the top mount brackets and rear cockpit upholstery tack wood installed. These are not installed on the California Hiboy Special. The phaeton body includes the body rear cockpit and front seat upholstery tack wood and rear seat riser. The top mount studs for the phaeton are included but not installed

Options and Pricing

1932 Roadster Body base 9750.00

Includes the lower posts for the traditional style windshield frame, mount brackets for folding top irons, and cockpit tack wood.

"California Hiboy Special" Body base 9500.00

For the smooth high-tech California look. No tack strip, no lower windshield posts, and no top mounts.

Please specify options when ordering.

A. Firewall:	Stock, Mod Stock or Recessed	std.
C. Deck lid:	Rumble or Trunk lid	std.
D. Dash:	Stock, Flat, or Auburn style or 1940 style w/glove box door	std. 250.00
E. Cowl:	Filled, Smooth, or Working Vent	std. 250.00
F. Door:	Stock (outside) or Hidden hinges	std.
L. Handle:	No outside handle links, or linkage for outside handle	std. 100.00
G. Deck latch:	Stock or Remote style	std.
N. Wsh Posts	Upgrade to chrome	225.00

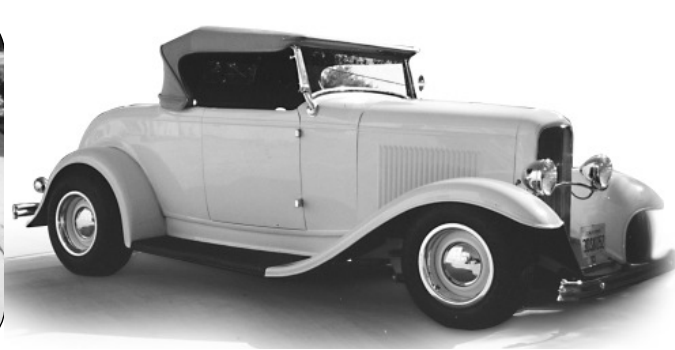
1932 Phaeton Body 11000.00

Please specify options when ordering.

A. Firewall:	Stock, Mod Stock or Recessed	std.
B. Seat:	Stock or 3" extra seat setback	
D. Dash:	Stock, Flat, or Auburn style or 1940 style w/glove box door	std. 250.00
E. Cowl:	Filled, Smooth, or Working Vent	std. 250.00
F. Door:	Stock (outside) or Hidden hinges	std.
L. Handle:	No outside handle links, or linkage for outside handle	std. 200.00
N. Wsh Posts	Upgrade to chrome	225.00



32 Roadster. Wescott Body,
built by John Eggum, Torrance, CA



32 Roadster. Wescott Body,
built by Dean Freeman, Lemon Grove, CA



1932 Roadster Body
with Fender and Grille Shell
Package

1932 Fender Package (fiberglass)* 1875.00

- 1 pr Front fenders
- 1 pr Rear fenders
- 1 Grille shell (Specify filled or stock grille shell)
- 1 Front apron (specify standard or chop)
- 1 pr Rear frame horn covers

DuVal Style Windshield Package* 1700.00

Wescott DuVal style windshield installed with extra brackets added to steel reinforcing.

* Package price applies if ordered with body.



32 Hiboy, Wescott body. Andy Brizio, Concord, Ca

