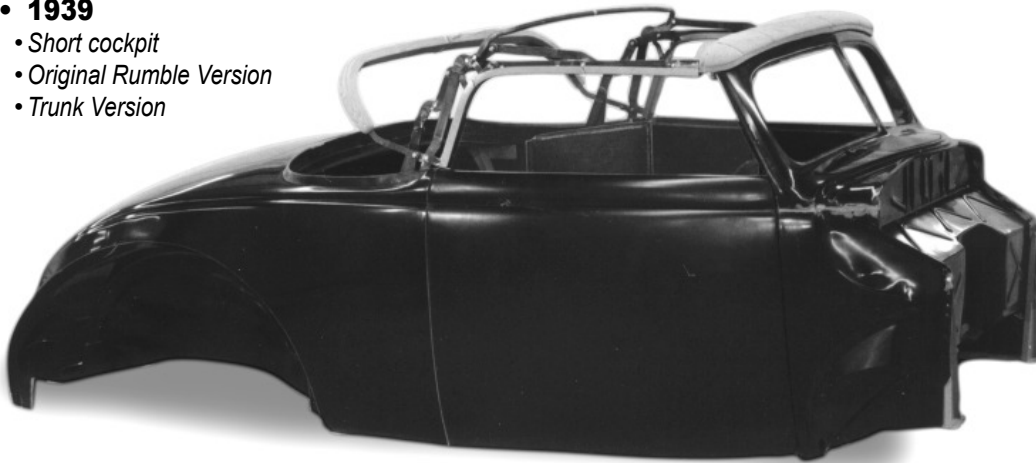


## 1939 and 1940 Convertible Bodies

- **1939**
  - Short cockpit
  - Original Rumble Version
  - Trunk Version



**39&40**  
Body  
By  
**Wescott**

- **Fiberglass body**
  - Original body lines retained
  - Steel reinforced
  - Hand laminated fiberglass
  - Door and Windshield garnish moldings included

- **Fiberglass body**
  - Original body lines retained
  - Steel reinforced
  - Hand laminated fiberglass

- **Doors installed with latches**

- Inner and outer panels like original
- Bear jaw style latches
  - inside handle mounts included
  - outside handle mounts optional
- Stock or hidden hinges

- **Cowl and windshield features**

- Working vent available or filled cowl
- Stock height or 2" chop



- **1940**
  - Long 2 seat cockpit
  - Trunk Lid



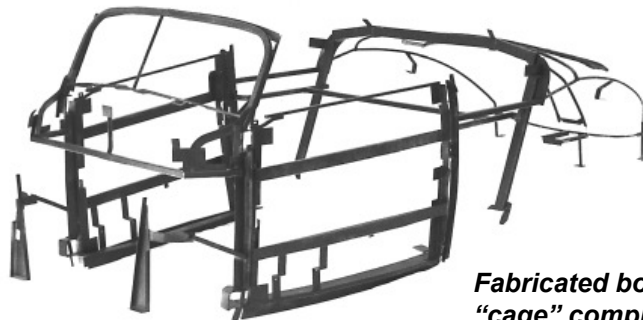
### Built-in internal steel reinforcing for safety & strength

**Cross-bracing of cowl and quarter panels, plus solid hinge mounts, creates exceptional rigidity and door alignment control**

**Critical mount points supported by steel:**

- Door hinges
- Door latches
- Trunk hinges
- Top Iron mounts
- Top Latch mounts

**Steel reinforcing is installed between fiberglass inner and outer door and deck lid panels**



**Fabricated box tubing "cage" completely surrounds cockpit**

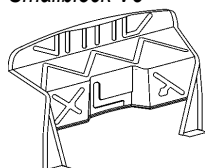
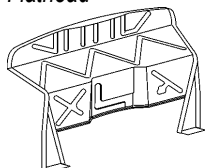
\* Parts with price listed as "not.avbl" are not known to be available at this time, but are listed for reference.

## 1939 and 1940 Convertible Bodies

### • Firewall Options

Flathead

Chevy Smallblock V8

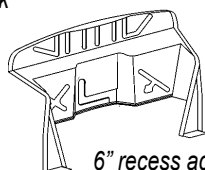


Ford Smallblock V8

Bigblock



1-1/2" recess



6" recess across firewall

Designed for  
Maximum Leg  
Room  
Left 1" recess  
Right 2" recess  
Center 4" recess

### • Dash Options

- Glove box lid included

1939  
Filled  
Style



1939  
Stock  
Style



1940  
Style



### Prices

1939 or 1940 Convertible body

**base price:**

19500.00

### Options

|                       |                                | <b>upcharge:</b> |
|-----------------------|--------------------------------|------------------|
| A Firewall            | Stock, Chevy, Ford, Bigblock   | std.             |
| C Deck Lid            | 1939-40 Trunk, 1939 Rumble     | std.             |
| D Dash                | 1939 Stock, Filled, 1940       | std.             |
| E Cowl Top            | Filled                         | std.             |
|                       | Working Vent                   | 300.00           |
| F Door hinge          | Stock or hidden                | std.             |
| G Trunk latch         | Remote or 1940 style           | std.             |
| L Door outside handle | no linkage                     | std.             |
|                       | Linkage and key lock           | 400.00           |
| J Windshied           | Stock height or chopped        | std.             |
| M Back body           | Dimple for fuel neck or filled | std.             |

### Fiberglass fender package

Front fenders, rear fenders, inner front fenders 3250.00  
1939 Deluxe/1940 or 1940 Deluxe hood

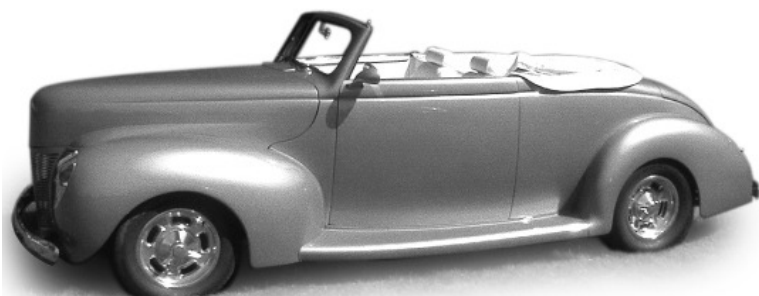
### Windows (frameless)

Operating windows include tempered glass that do not use frames, regulators, and felt,  
Specify clear, light grey, or light green tint

|       |                 |         |
|-------|-----------------|---------|
| Doors | Power operated  | 1200.00 |
| Doors | Manual operated | 1000.00 |

### Top Iron Package

1939 or 1940 with chrome 1940 latches 5000.00



## Custom Convertible Bodies

### • 1939 or 1940 Custom

- Channeled over frame 4-1/2"
- Sectioned 1939 Deluxe/40 Standard Hood
- Fenders raised 2-1/2"
- Tire openings in fenders raised 1-1/2"
- Back of body sectioned 1-1/2"
- Trunk lid only



\* Parts with price listed as "not.avbl" are not known to be available at this time, but are listed for reference.

19701 SE Highway 212  
Damascus, OR 97089

**Catalog 7/2017 B-21**

1-800-523-6279  
www.wescottsauto.com