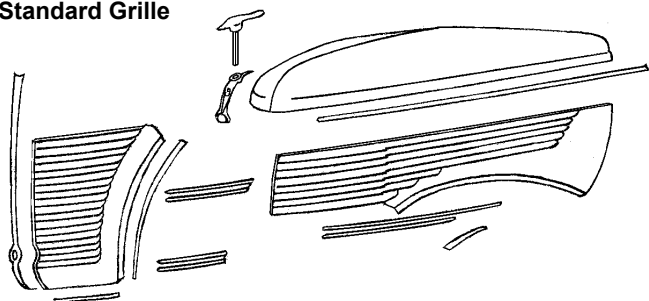


## 1938 Standard & Deluxe, 1939 Standard Grille, Hood, Fenders and Running Boards



### 1938 Standard Grille, Hood and Front Fenders

#### 1938 Standard Grille



81A-8200-A	Grille (rh and lh panels)	not.avbl
81A-8209	Grille center vertical brace	not.avbl
81A-8232-A	Grille rear horizontal tie bar	not.avbl

#### 1938 Standard Radiator Shroud

81A-8084/5-A	Radiator side panels	not.avbl
81A-8240-A	Grille inner baffel	not.avbl
81A-16550	Grille to crossmember shield	not.avbl

#### 1938 Standard Hood Handles & Ornaments

81A-8215-A	Hood handle	not.avbl
81A-8218-A	Hood handle base	not.avbl
81A-8227-A	Hood handle base gasket	2.00 ea
48-8212	Hood ornament "Ford" emblem, chrome/blue	17.50 ea
81A-8259-A	Hood ornament "85" emblem, chrome/blue	50.00 ea

#### 1938 Standard Hood Latch

81A-16627-A	Hood latch dowel	not.avbl
81A-16628	Hood latch cam	not.avbl
81A-16650	Hood handle tension spring	not.avbl

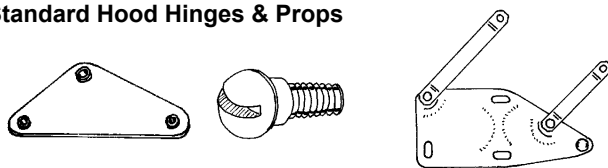
#### 1938 Standard Hood

81A-16710-A	Hood top	not.avbl
81A-16618-A	Hood side panel RH	not.avbl
81A-16619-A	Hood side panel LH	not.avbl
81A-16750-RK	Hood side panel mounting studs & brackets	45.00 ea

#### 1938 Standard Hood and Grille Trim

81A-8157-A	Grille trim, center, stainless	not.avbl
81A-8184/5-A	Grille trim, sides, stainless	not.avbl
81A-8330-S	Grille horizontal trim (12 pcs), stainless	not.avbl
81A-16722-AS	Hood side trim, lower	not.avbl
81A-16723-AS	Hood side trim, grille bar	not.avbl
81A-20001-A	Trim clips: grille bar and hood louver (56 pcs)	12.50 set
81A-20004-A	Trim clips: grille and hood side (12 pcs)	5.00 set

#### 1938 Standard Hood Hinges & Props



91A-16796/7	Hinges, plain	27.50 pr
91A-16796/7-SS	Hinges, Stainless	80.00 pr
91A-16796-HK	Hinge bolts w/safety wire, set of 4	7.50 ea
78-16746/7	Pads, rubber	10.00 pr
78-16782	Props (ratchet type)	not.avbl
01A-16782-MS	Prop sholder screws, plain	7.50 pr
01A-16782-MSS	Prop sholder screws, stainless	12.50 pr

#### 1938 Standard Hood Lacing and Hood Rubber Bumpers

78-16740-S	Hood lacing, rubber, w/screws,	10.00 ea
78-16761	Hood rubber bumper set	22.50 set

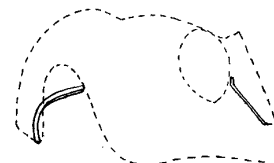
#### 1938 Standard Front Fenders, Fiberglass



RFF38SP	RH front, 1938 Standard Passenger	550.00 ea
LFF38SP	LH front, 1938 Standard Passenger	550.00 ea
RFI38SP	RH inner fender, 1938 Standard	200.00 ea
LFI38SP	LH inner fender, 1938 Standard	200.00 ea

#### Front Fender Brackets

Fender to Frame:		
48-16067-R	RH	10.00 ea
48-16067-L	LH	10.00 ea
Fender skirt (behind tire)		
78-16094	RH or LH	25.00 ea



\* Parts with price listed as "not.avbl" are not known to be available at this time, but are listed for reference.

**1938 Standard & Deluxe, 1939 Standard  
Grille, Hood, Fenders and Running Boards, cont**

**1938 Deluxe  
Grille, Hood and Front Fenders**



**1938 Deluxe Grille**

*illustration in progress*

81A-8200-B	Grille (rh and lh panels)	not.avbl
81A-8157-B	Grille center vertical ornament	450.00 ea
81A-16626	Grille upper horizontal tie/latch catch	not.avbl

**1938 Deluxe Radiator Shroud**

81A-8084/5-B	Radiator side panels	not.avbl
81A-8240-B	Grille inner baffel	not.avbl
81A-16550	Grille to crossmember shield	not.avbl

**1938 Deluxe Hood Handles & Ornaments**

81A-8215-B	Hood handle	not.avbl
81A-8218-B	Hood handle base	not.avbl
81A-8227-B	Hood handle base gasket	2.00 ea
81A-16852	Hood nose ornament	200.00 ea
81A-16605/6	Hood side V8 emblems	27.50 pr

**1938 Deluxe Hood Latch**

81A-16628	Hood latch cam	not.avbl
81A-16650	Hood handle tension spring	not.avbl

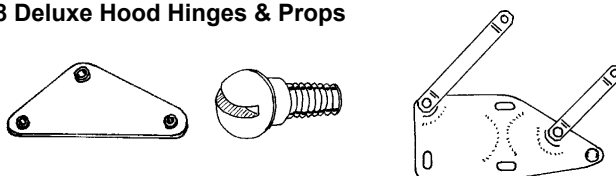
**1938 Deluxe Hood**

81A-16710-B	Hood top	not.avbl
81A-16618-B	Hood side panel RH	not.avbl
81A-16619-B	Hood side panel LH	not.avbl
81A-16750-RK	Hood side panel mounting studs & brackets	45.00 ea

**1938 Deluxe Hood and Grille Trim**

81A-8184/5-B	Grille trim, sides, stainless	not.avbl
81A-16722-BS	Hood side trim, lower	not.avbl
81A-20004-B	Trim clips: grille and hood side (10 pcs)	5.00 set

**1938 Deluxe Hood Hinges & Props**



91A-16796/7	Hinges, plain	27.50 pr
91A-16796/7-SS	Hinges, Stainless	80.00 pr
91A-16796-HK	Hinge bolts w/safety wire, set of 4	7.50 ea
78-16746/7	Pads, rubber	10.00 pr
78-16782	Props (ratchet type)	not.avbl
01A-16782-MS	Prop sholder screws, plain	7.50 pr
01A-16782-MSS	Prop sholder screws, stainless	12.50 pr

**1938 Deluxe Hood Lacing and Hood Rubber Bumpers**

78-16740-S	Hood lacing, rubber, w/screws,	10.00 ea
78-16761	Hood rubber bumper set	22.50 set

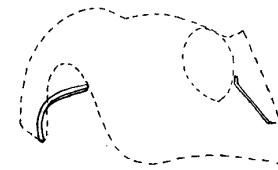
**1938 Deluxe Front Fenders, Fiberglass**



RFF3839P	RH front, 1938 Dlx, 1939 Std	550.00 ea
LFF3839P	LH front, 1938 Dlx, 1939 Std	550.00 ea
RFI3839P	RH inner fender, 1938 Dlx, 39 Std	200.00 ea
LF13839P	LH inner fender, 1938 Dlx, 39 Std	200.00 ea

**Front Fender Brackets**

Fender to Frame:		
48-16067-R	RH	10.00 ea
48-16067-L	LH	10.00 ea
Fender skirt (behind tire)		
78-16094	RH or LH	25.00 ea



\* Parts with price listed as "not.avbl" are not known to be available at this time, but are listed for reference.

**1938 Standard & Deluxe, 1939 Standard  
Grille, Hood, Fenders and Running Boards, cont**



**1938 Deluxe  
Grille, Hood and Front Fenders**

**1939 Standard Grille**

*illustration in progress*

91A-8200-A	Grille (rh and lh panels)	not.avbl
91A-8157-A	Grille center vertical ornament	450.00 ea
81A-16626	Grille upper horizontal tie/latch catch	not.avbl

**1939 Standard Radiator Shroud**

81A-8084/5-B	Radiator side panels	not.avbl
91A-8240-B	Grille inner baffel	110.00 ea
81A-16550	Grille to crossmember shield	not.avbl

**1939 Standard Hood Handles & Ornaments**

91A-8215-A	Hood handle	not.avbl
91A-8218-A	Hood handle base	not.avbl
91A-8227-A	Hood handle base gasket	not.avbl
91A-8259	Hood nose "85" emblem	not.avbl
91A-16606	Hood side "Ford" emblems	32.50 ea

**1939 Standard Hood Latch**

81A-16628	Hood latch cam	not.avbl
81A-16650	Hood handle tension spring	not.avbl

**1939 Standard Hood**

81A-16710-B	Hood top	not.avbl
91A-16618-A	Hood side panel RH	not.avbl
91A-16619-A	Hood side panel LH	not.avbl
81A-16750-RK	Hood side panel mounting studs & brackets	45.00 ea

**1939 Standard Hood and Grille Trim**

91A-8330-S	Grille horizontal trim (6 pcs), stainless	not.avbl
91A-16724-AS	Hood side trim	not.avbl
91A-16722-AS	Hood louver trim (4pc)	not.avbl
91A-20001-A	Trim clips: grille and hood side (30 pcs)	10.00 set

**1939 Standard Hood Hinges**

**Hood Hinges:**

91A-16796/7	Plain	27.50 pr
91A-16796/7-SS	Stainless	80.00 pr

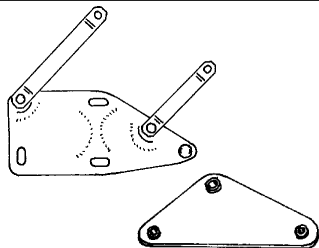
**Hood Hinge to Cowl Pads**

78-16746/7	Rubber	10.00 pr
------------	--------	----------

**Hood Hinge Bolts**

*includes safety wire*

91A-16796-HK	Set of 4	7.50 ea
--------------	----------	---------



**1939 Standard Hood Props**

**Hood Support Arms with Springs**

*Uses shoulder bolt top and bottom*

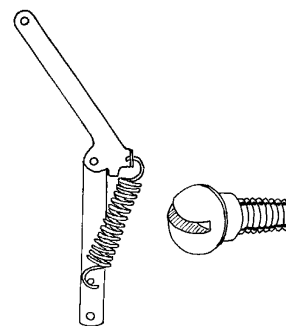
91A-16782/3	Plain	55.00 pr
91A-16782/3-SS	Stainless	90.00 pr

**1939-48 Spring only (replacement):**

91A-16789	Plain	7.50 ea
91A-16789-SS	Stainless	12.50 ea

**Hood Support Shoulder Screws**

01A-16782-MS	Plain	7.50 pr
01A-16782-MSS	Stainless	12.50 pr



**1939 Standard Hood Lacing and Hood Rubber Bumpers**

78-16740-S	Hood lacing, rubber, w/screws,	10.00 ea
78-16761	Hood rubber bumper set	22.50 set

**1939 Standard Passenger Front Fenders, Fiberglass**



RFF3839P	RH front, 1938 Dlx, 1939 Std	550.00 ea
LFF3839P	LH front, 1938 Dlx, 1939 Std	550.00 ea
RFI3839P	RH inner fender, 1938 Dlx, 39 Std	200.00 ea
LF13839P	LH inner fender, 1938 Dlx, 39 Std	200.00 ea

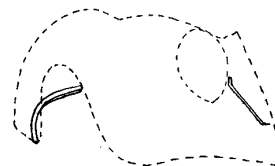
**Front Fender Brackets**

Fender to Frame:

48-16067-R	RH	10.00 ea
48-16067-L	LH	10.00 ea

Fender skirt (behind tire)

78-16094	RH or LH	25.00 ea
----------	----------	----------



\* Parts with price listed as "not.avbl" are not known to be available at this time, but are listed for reference.

**1938 Standard & Deluxe, 1939 Standard  
Grille, Hood, Fenders and Running Boards, cont**

**Rear Fenders:  
1938**

**Coupe & Convertible**

*Fiberglass*



**Right:**  
RRF38C 425.00 ea

**Left:**  
LRF38C 425.00 ea

**Rear Fenders:  
1938 Phaeton,  
Standard Sedan,  
Convertible Sedan**

*Fiberglass*



**Right:**  
RRF38S 425.00 ea

**Left:**  
LRF38S 425.00 ea

**Rear Fenders: 1938 Deluxe Sedan, 1939 Coupe & Sedan**



*Fiberglass*

RRF3840P	RH: No taillight mount	425.00 ea
LRF3840P	LH: No taillight mount	425.00 ea
RRF3839P	RH: 1939 taillight mount	425.00 ea
LRF3839P	LH: 1939 taillight mount	425.00 ea
RRF40P	RH: 1940 taillight mount	425.00 ea
LRF40P	LH: 1940 taillight mount	425.00 ea

**Sedan Delivery  
Rear Fenders**

*Fiberglass*

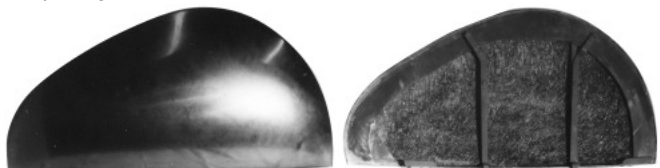


**Right:**  
RRF3539SD 425.00 ea

**Left:**  
LRF3539SD 425.00 ea

**Teardrop Fender Skirts, Fiberglass**

*Excellent fiberglass reproductions of the aftermarket bubbled fender skirts that were so popular in the '50's. Includes locking arms to latch to the top of the fender, clamps to the bottom of the skirts to the front and rear of the wheel opening, stainless screws, and rubber seals.*

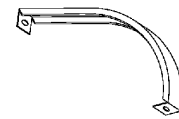


FST3740F Fender Skirts, fiberglass 650.00 pr

**Rear Fender Braces**

Fits RH or LH

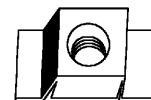
78-16391 25.00 ea



**5/16-24 Cage Nuts**

*Welded to body and frame for fender and running board mounting.*

AH-3145 Cage nut 1.50 ea



**Fender Welt**

**Black vinyl, 25 ft. length**

48-16070-B 3/16" bead 17.50 ea

48-16070-D 1/4" bead 17.50 ea

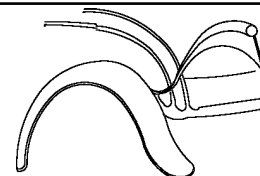
**Vinyl, clad w/stainless bead, 8 ft.**

48-16070-SS 7/32" bead 22.50 ea

**Vinyl, COLORED, Use part suffix to indicate color**

*Maroon: -MR, Caramel: -CR, Medium Blue: -BLM, Red: -RD, Dark Brown: -BRD, Dark Green: -GRD, White: -WH, Grey: -GY, Bright Orange: -OR, Yellow: -YL, Bright Red: -RR*

48-16070-xx 25 ft length, Specify Color 35.00 ea



**Running Boards**

*Fiberglass boards are very strong, over 1/4" thick and have the proper arch for excellent fit and appearance.*



**Fiberglass, smoothie style:**

RRB3739PS	RH, smooth running board	400.00 ea
LRB3739PS	LH, smooth running board	400.00 ea

**Fiberglass, w/molded ribs to simulate original style:**

RRB3739P	RH, w/molded ribs	400.00 ea
LRB3739P	LH, w/molded ribs	400.00 ea

**Steel boards and rubber covers:**

*Steel boards with vulcanized rubber covers are excellent quality*

78-16450/1-BD	Running boards w/molded covers	1400.00 pr
78-16450/1	Molded rubber replacement covers	225.00 pr
48-16455-MB	1935-48 Running board mount bolt	1.00 ea
78-16453-S	Running board mount bolt set, 37-48	12.50 set

**1937-39 Running Board Stainless Moldings**

78-16462-S	1937-38 Passenger, 1939 Standard 95.00 pr

\* Parts with price listed as "not.avbl" are not known to be available at this time, but are listed for reference.