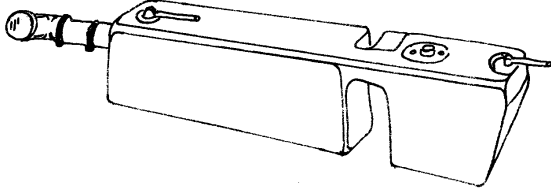


Fuel Tanks

1928-31 Street Rod Saddle Fuel Tanks

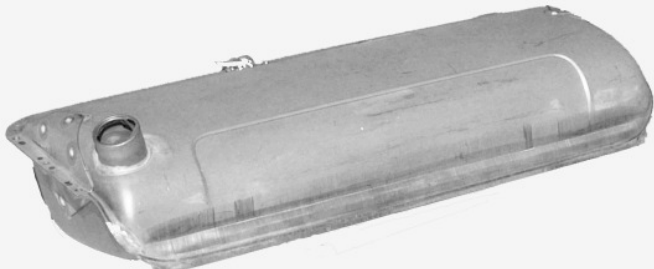
Manufactured by "Tanks". Made of strong no-dent polyethylene. Gas fill is through apron, a "push to fill" cap is included. The complete kit includes tanks, mounting brackets and changeover valve. Uses running board bracket to frame bolts for secure mounting.



| | | |
|------------|------------------------------|------------|
| A-9002-AST | 1928-29 (external fill neck) | 475.00 set |
| A-9002-BST | 1930-31 (external fill neck) | 475.00 set |

1932 Fuel Tank, Stamped Steel

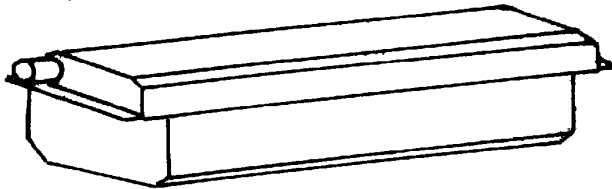
Nice replacement for street rods. Has original shaped corners on top and bottom, original detail lines and triangular reinforcement plates. Includes bolt in fuel pickup unit with filter screen, vent tube with rollover check valve, and return line.



| | | |
|-----------|--------------------------------------------|-----------|
| B-9002-HB | 1932 Passenger, stock capacity (appx 11 g) | 425.00 ea |
| B-9002-16 | 1932 Passenger, extra capacity (16 g) | 450.00 ea |

1932-48 Ford Street Rod Fuel Tanks, Stainless

These tanks are fabricated stainless steel and feature baffles, vents, top mount outlet tubes, and are drilled and tapped for a standard aftermarket (Sun, SW, or Classic) sending unit. Available in 15 or 20 gallon capacity. 1932 and 1933-34 passenger tanks include a non-leak screw on fuel cap. All other tanks require a filler neck. Stock or reproduction filler necks can be used (50-9002-x must use repro neck). 2" dia neck to tank hose is used 1935-40, 2 1/4" for 1941-48.



| Year | 15 gallon capacity | 20 gallon capacity |
|------------------------------------|-----------------------|-----------------------|
| 1932 Fendered | B-9002-15 900.00 ea | B-9002-20 975.00 ea |
| 1932 Hiboy | B-9002-15H not.avbl | B-9002-20H not.avbl |
| 1933-34 Pass | 40-9002-15 900.00 ea | 40-9002-20 925.00 ea |
| 1933-37 Pickup | 50-9002-15 900.00 ea | 50-9002-20 925.00 ea |
| & 1933-34 Sdn Dlvy & 1934 Victoria | | |
| 1935-36 Pass | 48-9002-15 900.00 ea | 48-9002-20 925.00 ea |
| 1937 Passenger | 78-9002-15 900.00 ea | 78-9002-20 925.00 ea |
| 1938-40 Pass | 91A-9002-15 900.00 ea | 91A-9002-20 925.00 ea |
| 1938-41 Pickup | | |
| 1941-48 Pass | 11A-9002-16 975.00 ea | 11A-9002-20 975.00 ea |
| 1939-40 Mercury | | 99A-9002-20 925.00 ea |

NOTE: Above tanks with tune-port (tank mounted) fuel pumps, available for extra charge

Steel Gas Tanks, Reproduction style

Stamped steel with original external design. Fuel sender opening accepts aftermarket 6 hole senders or replacement 5 hole senders (original Ford senders will not work). 1933-35 original hydrostatic sender requires an adaptor, included.

| | | |
|-----------|----------------------------------------|-----------|
| 40-9002 | 1933-34 Passenger (except 34 victoria) | 275.00 ea |
| 67-9002 | 1934 Victoria, 1935-37 Pickup | 375.00 ea |
| 68-9002 | 1935-36 Passenger | 375.00 ea |
| 78-9002 | 1937 Passenger | 375.00 ea |
| 81A-9002 | 1938-40 Passenger, 1938-41 Pickup | 275.00 ea |
| 99A-9002 | 1939-40 Mercury | not.avbl |
| 11A-9002 | 1941-48 Passenger | 275.00 ea |
| BAAA-9002 | 1953-55 Pickup | 200.00 ea |
| B-9002-HB | 1956 Pickup | 425.00 ea |

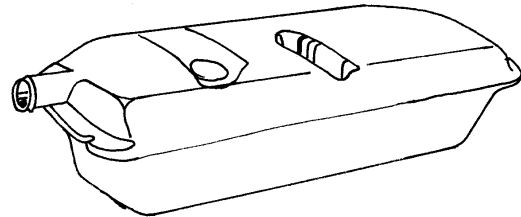
1948-55 Ford Pickup Street Rod Fuel Tanks, Stainless

These tanks are fabricated stainless steel and feature baffles, vents, top mount outlet tubes, and are drilled and tapped for a standard aftermarket (Sun, SW, or Classic) sending unit.

| | | |
|--------------|--------------------------------------|-----------|
| BAAA-9002-SR | 1953-55 Pickup (stock capy.) | 925.00 ea |
| 7C-9002-18 | 1948-52 PU, stnls, 18 gal, under bed | 925.00 ea |

1933-55 Ford Street Rod Fuel Tanks, Polyethylene

Molded polyethylene tanks featuring a center baffel tunnel that minimizes sloshing and forms a no sag bottom. Tanks have a top mount pickup tube. Metal inserts are provided for standard aftermarket (Sun, SW, or Classic) sending units. 1933-34 tanks have 16 gallon capacity, all others 17 gallon. 1933-34 passenger tanks include a non-leak screw on fuel cap. All other tanks require a filler neck. Stock or reproduction filler necks can be used (50-9002-x must use repro neck). 2" dia neck to tank hose is used for 1935-40, 2 1/4" for 1941-48.



| | | |
|-------------|-----------------------------------------------------------------------------------------------------|-----------|
| 40-9002-P | 1933-34 Passenger (external fill neck) | 250.00 ea |
| 40-9002-PG | 1933-34 Passenger hidden fill (includes under apron "push thru fill" gas cap and access lid kit) | not.avbl |
| 50-9002-P | 1933-34 Sedan Delivery, 1934 Victoria, 1933-37 Pickups | 250.00 ea |
| 48-9002-P | 1935-36 Passenger: | 250.00 ea |
| 78-9002-P | 1937 Passenger: | 250.00 ea |
| 81A-9002-P | 1938-40 Pass, 1938-41 PU: | 280.00 ea |
| 11A-9002-P | 1941-48 Passenger, 1939-48 Mercury | 250.00 ea |
| 8A-9002-P | 1949-51 Passenger | 250.00 ea |
| BAAA-9002-P | 1953-55 Pickup | 250.00 ea |

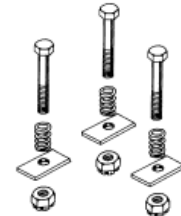
Universal Fuel Tanks

Steel tanks for non-original mounting locations. Tanks include no leak thread on cap, and "rollover valve"

| | | |
|------------|------------------------------|-----------|
| HR-9270-16 | 16 gal, 34" x 10" x 11" tall | 300.00 ea |
| HR-9270-18 | 18 gal, 34" x 10" x 14" tall | 300.00 ea |

1932-40 Fuel Tank to Frame Mounting Kit

Includes 3 ea bolts, springs, and rubber pads.



| | |
|-----------|-----------|
| B-9002-MS | 10.00 set |
|-----------|-----------|

* Parts with price listed as "not.avbl" are not known to be available at this time, but are listed for reference.

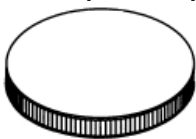
Fuel Tanks

1941-48 Passenger Fuel Tank Mounting Kit

| | | |
|------------|-------------------------------|----------|
| 21A-9046-K | Brackets w/cage nuts and pads | 50.00 ea |
|------------|-------------------------------|----------|

1932-48 Passenger, 1932-50 Pickup Gas Caps

1932-35 gas caps were originally vented, 1936 later non-vented

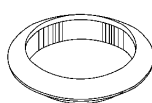
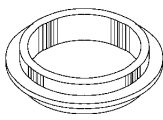
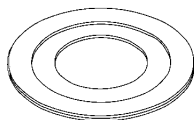


| | | |
|-------------|--------------------------------------------------|----------|
| B-9030-SS | Non-vented, smooth stainless top, non-locking | 15.00 ea |
| B-9030-V8 | Non-vented, V8 script stainless top, non-locking | 15.00 ea |
| 11C-9030 | Vented, smooth stainless top, non-locking | 7.50 ea |
| 18-9030-V8 | Vented, V8 Script stainless top, non-locking | 40.00 ea |
| 48-18416 | Locking, w/Ford script lock cover, vented | 30.00 ea |
| 01A-18416-B | Locking, w/flipper style lock cover, vented | 45.00 ea |

Gas Caps, 1949-59 Passenger, 1951-70 Pickups

| | | |
|-------------|------------------------------------------------|----------|
| 8A-9030 | Vented, smooth stainless top, non-locking | 10.00 ea |
| 01A-18416-A | Locking, with flipper style lock cover, vented | 45.00 ea |
| 8A-18416 | Locking, chrome, no lock cover | 12.50 ea |

Gas Filler Neck Rubber Grommets



| | | |
|-------------|----------------------------------------|----------|
| 40-16388 | 1933-34 Passenger | 12.50 ea |
| 40-9080-V | 1933-34 Victoria | 30.00 ea |
| 48-9080 | 1935-36 Passenger | 7.50 ea |
| 48-9081 | 1935-37 Sedan Delivery & Station wagon | 20.00 ea |
| 68-9080 | 1936 Convertible sedan | 15.00 ea |
| 78-9080 | 1937-38 Passenger | 17.50 ea |
| 91A-9080 | 1939-40 Passenger, 1938-41 Pickup | 5.00 ea |
| 21C-9080 | 1942-47 Pickup | 17.50 ea |
| 7C-9080 | 1948-52 Pickup | 17.50 ea |
| 7C-9080-P | 1948-52 Panel | 25.00 ea |
| BAAA-9080 | 1953-55 Pickup | 30.00 ea |
| B6C-9080 | 1956 Pickup | 15.00 ea |
| BAAA-9080-P | 1953-56 Panel | 25.00 ea |

Filler Necks, original design, for original or repro tanks

| | | |
|------------|-------------------------------------|----------|
| 48-9034 | 1935 Passenger | 60.00 ea |
| 78-9034-A | 1936 & early 1937 w/threaded sleeve | 60.00 ea |
| 78-9034-B | 1937 Late Passenger, clamps to hose | 40.00 ea |
| 77-9034-A | 1937 Pickup | 60.00 ea |
| 91A-9034-B | 1938-40 Passenger | 45.00 ea |
| 81C-9034-B | 1938-41 Pickup | 60.00 ea |
| 21A-9034-A | 1941-48 Passenger | 45.00 ea |

Gas fill neck lead washer

| | | |
|---------|----------------|----------|
| 46-9051 | 1935-37 Pickup | 10.00 ea |
|---------|----------------|----------|

Filler Necks, Heavy duty, for reproduction tanks.

Stainless steel, heavier construction than original style. Uses 2" connector hose and early Ford type filler cap.

| | | |
|-------------|---------------------------------------|-----------|
| 40-9034-SR | 1933-34 Sedan Delivery, Station Wagon | 195.00 ea |
| 46-9034-SR | 1933-34 Pickup | 195.00 ea |
| 50-9034-SR | 1934 Victoria | 195.00 ea |
| | 1935-37 Pickups | |
| 78-9034-SR | 1937 Passenger | 195.00 ea |
| 81A-9034-SR | 1938 Cpe, Std Sedan | 195.00 ea |
| 91A-9034-SR | 1938 Dlx Sedan | 195.00 ea |
| | 1939-40 Passenger | |
| 21A-9034-SR | 1941-48 Passenger | 225.00 ea |
| HR-9034-SR | Universal, 6" long | 155.00 ea |

Filler Neck to Tank Hoses

| | | |
|------------|------------------------------------------|----------|
| H-9047-200 | 2" diameter, for repro tanks & necks | 10.00 ea |
| H-9047-225 | 2 1/4" diameter, for repro tanks & necks | 10.00 ea |
| 78-9047 | 1937-40 Passenger, 38-41 Pickup | 10.00 ea |
| 81A-9047 | 1938-40 Station Wagon | 12.50 ea |
| 11A-9047-A | 1941-48 Passenger, 42-55 Pickup | 7.50 ea |
| 11A-9047-B | 1941-48 Station Wagon | not.avbl |

Filler Neck Hose Clamps

| | | |
|--------------|---------------------------------|---------|
| B-8287-A12 | 1937-40 Passenger, 38-41 Pickup | 4.00 ea |
| 11A-8287-A16 | 1941-48 Passenger, 42-55 Pickup | 2.50 ea |

Fuel Gauge Sending Units, Original Style

Original bolt pattern. 1935-55 are 6 volt, use in 12 volt system requires voltage drop. These are resistance type senders and while they should show full and empty correctly with original gauges intermediate readings will vary from the original vibrator coil type sending units.

May not be compatible with aftermarket gauges, check with gauge manufacturer.

| | | |
|--------------|-----------------------------------|----------|
| 01A-9275-6V | 1935-55 Passenger, 1935-47 Pickup | 40.00 ea |
| 7C-9275-6V | 1948-52 Pickup | 40.00 ea |
| BAAA-9275-6V | 1953-55 Pickup | 40.00 ea |
| B6C-9275 | 1956 Pickup; 12 v | 40.00 ea |

Fuel Gauge Gasket

| | | |
|-----------|-------------------|---------|
| 68-9276-N | 1936-56, neoprene | 2.50 ea |
|-----------|-------------------|---------|

Important note:

Gas Gauges and Sending Units

Original Ford 1932-35 used a hydrostatic fuel gauge with sending unit and combined fuel pickup with a 6 on 2" screw pattern

Original Ford 1936-56 used an electric fuel gauge with sending unit on a 6 on 2-3/4" screw pattern, and require an adaptor to fit an aftermarket tank.

Most aftermarket fuel gauges use a 5 on 2-3/4" screw pattern, and require an adaptor or tank modification to fit an original tank.

Gauges and sending units are usually NOT COMPATIBLE between manufactures. ie, Ford works with Ford only, GM with GM only, Specific aftermarket with specific aftermarket only. Check with the aftermarket gauge manufacturer for sending unit compatibility.