

1928-29 Coupe, Roadster, Tudor, Phaeton, and Pickup Body Repair Parts

Cowl Top Panels

(all except Fordor and Cabriolet)

With dummy filler neck

CTT2829A fiberglass 250.00 ea

Smooth, no filler neck

CTT2829F fiberglass 250.00 ea

A-117-A Steel 325.00 ea

With working cowl vent

Includes vent door, hinge, ratchet, and spring

CTT2829V fiberglass 650.00 ea



Recessed Cowl/Firewall, Fiberglass

(all except Fordor and Cabriolet)

Laminated using fire-retardant resin. Steel reinforcing and floorboard supports installed. Fits smallblock Chevy V8, even if using HEI distributor. Upper firewall is molded in. This is the minimum recessed firewall that will allow you to keep more legroom than any other recessed firewall.

CFA2829R Firewall: Recessed 650.00 ea

FLB31R Floorboard/trans cover, fiberglass 275.00 ea



Cowl/Firewall, Fiberglass

(all except Fordor and Cabriolet)

Upper Firewall

Mounts to cowl top

UFP2829A 175.00 ea

1928-29 Lower Firewall

Stock style, laminated, using fire-retardant resin. Steel reinforced, has floorboard supports installed.

For cars on Model A frame

CFA2829A 650.00 ea

For 29 Hiboy on '32 frame

CFA29HI 650.00 ea



Steel Replacement Firewall Parts

(all except Fordor and Cabriolet)

Street Rod Upper Firewall

Works with stock firewall.

BN-281003 105.00 ea

Stock lower firewall w/holes

A-1015-A 325.00 ea

Stock lower firewall no holes

A-1015-AO 300.00 ea

Recessed lower firewall

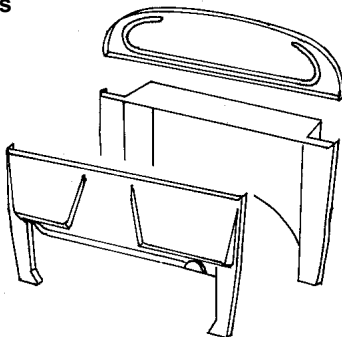
4" recess, fits chevy smallblock

BN-281002 350.00 ea

Front floorboard / trans hump

for recessed lower firewall

BN-281005 190.00 ea



Original Style Floorboards

A-35130-AS Front floorboards, wood 90.00 pr

AH-1122 Floorboard mounting screws 12 pcs 5.00 set

A-35130-S Front floorboard to body seal, felt 15.00 ea

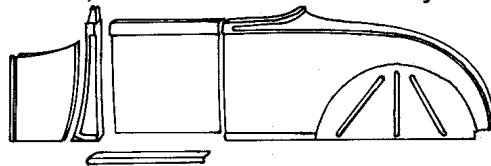
A-35123-FP Pedal & Steering tube seal, felt 5.00 ea

A-35122-S Pedal & column seal cover plate set 7.50 ea

A-35245-A Shift lever plate 7.50 ea

A-35245-CL Shift lever plate clips 2.50 set

1928-29 Roadster, Roadster PU & Phaeton Body Parts



Cowl Parts:

A-114-A Front cowl sides 200.00 pr

A-1011-A RH hinge post, w/upper braces 300.00 ea

A-1010-A LH hinge post, w/upper braces 300.00 ea

A-1010-AB Hinge post lower braces 70.00 pr

A-1005-A Cowl upper cross bar (outer), no braces 175.00 ea

A-1001-AB Cowl upper cross bar end braces 100.00 pr

A-1001-ACB Cowl upper cross bar center braces 30.00 pr

Door Parts

Stamped Steel. Good quality, requires expert bodywork for perfect fitting.

We recommend fitting the inner panel to body before installing outer skin.

RH **LH**

Front outer, stock A-1040-A 300.00 ea A-1041-AR 300.00 ea

Front outer, smooth A-1040-AR 300.00 ea A-1044-A 375.00 ea

Front inner A-1044-A 400.00 ea

A-136-A Outer door patch panels, roadster, 6" tall 75.00 pr

A-736-A Outer door patch panels, phaeton, 6" tall 90.00 set

Rocker Panels

A-35525-S Roadster & Phaeton: Front 225.00 pr

A-36325-S Phaeton: Rear 225.00 pr

A-36325-XS Phaeton: Rear Extension 50.00 pr

A-1034 Mounting brackets on sill 45.00 pr

Roadster Quarter Panels

*Note: Quarter panels shipped only by truck from Ohio.

A-2050-A Quarter panel with inner braces, RH* 875.00 ea

A-2051-A Quarter panel with inner braces, LH* 875.00 ea

A-150-A Quarter patch panels, roadster 30.00 pr

A-181-AB Wheel well patch panels, roadster 55.00 pr

A-170-A Rear body corner patch, roadster 32.50 pr

A-170-ST Body panel joint "T" strip, must form to fit 65.00 ea

Roadster Pickup Cab Back & Quarters

A-877-A 1928-29 Cab back panel 300.00 ea

A-877-ABR 1928-29 Braces for cab back 125.00 pr

A-1050-A 1928-29 LH Quarter, w/braces 300.00 ea

A-1051-A 1928-29 RH Quarter, w/braces 300.00 ea

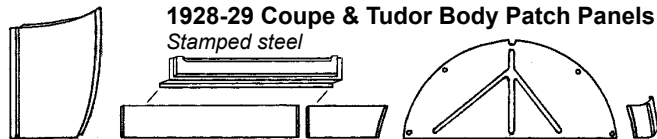
Phaeton Seat Back & Quarters

A-767-A Front seat back panel (may need bodywork) 300.00 ea

A-781-A Wheel well patch panels 55.00 pr

A-470-A Rear body corner patch 55.00 pr

A-170-ST Body panel joint "T" strip 65.00 ea



1928-29 Coupe & Tudor Body Patch Panels

Stamped steel

A-114-A Front cowl sides 200.00 pr

A-336-A Door outer panel patch, 6" tall 75.00 pr

A-336-AT Door outer panel patch, 22" tall, fits RH or LH 80.00 ea

A-336-IA Door inner panel patch 50.00 pr

A-437-B Door inner vertical brace 25.00 ea

A-438-B Quarter inner window stop support, Tudor not.avbl

A-350-A Quarter patch panels 30.00 pr

A-381-AB Wheel well patch panel, coupe 55.00 pr

A-481-AB Wheel well patch panel, tudor sedan 55.00 pr

A-170-A Rear body corner patch, coupe 32.50 pr

A-470-A Rear body corner patch, tudor 55.00 pr

A-463-AP Rear body panel patch, 6" tall, tudor 45.00 ea

A-463-AT Rear body panel patch, 22" tall, tudor 170.00 ea

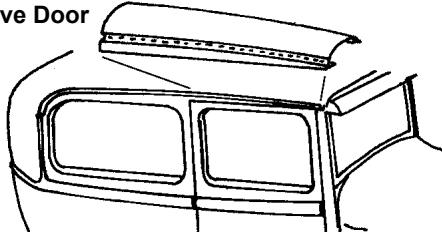
* Parts with price listed as "not.avbl" are not known to be available at this time, but are listed for reference.

1928-29 Coupe, Roadster, Tudor, Phaeton, and Pickup Body Repair Parts, cont

Body Roof Panels Above Door Stamped Steel

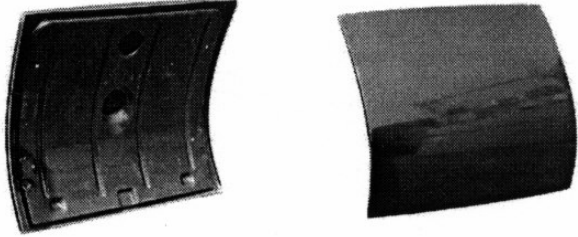
1928-29 Tudor:

| | |
|-----------|-----------|
| RH: | |
| A-47775-R | 140.00 ea |
| LH: | |
| A-47775-L | 140.00 ea |



Coupe, Roadster & Cabriolet Deck Lid Wescott fiberglass deck lid

Fiberglass inner and outer panels with steel reinforcing. Steel provides secure mounting for hinges, trunk prop, and rumble seat.



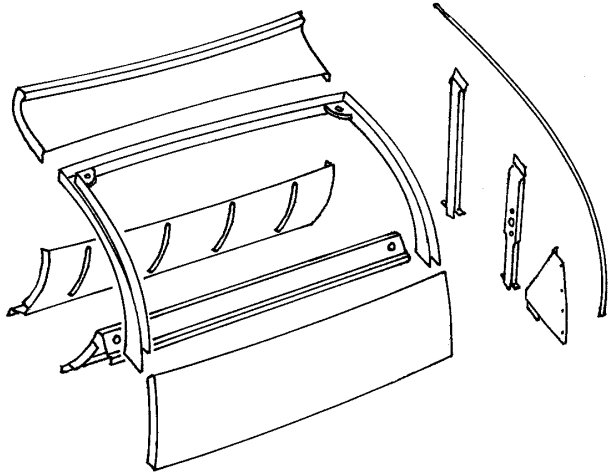
| | | |
|--------------|--|-----------|
| DL2829CR | Deck lid set up for stock latch | 850.00 ea |
| DL3031CR-REM | Deck lid set up for remote latch striker | 850.00 ea |

Steel replacement deck lid panels

Stamped steel, good quality. These require some bodywork and are best fitted to body before fitting inner and outer panels together

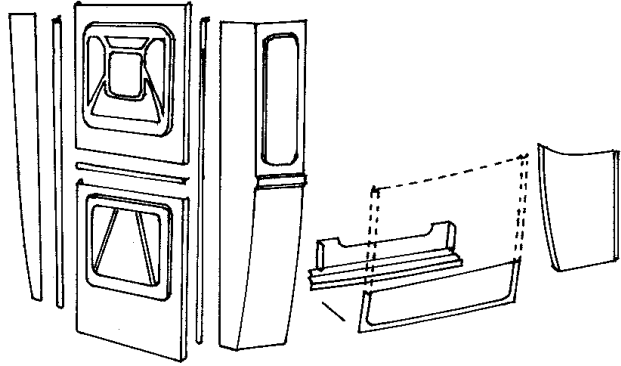
| | | |
|------------|-----------------------------|-----------|
| A-1059-ABS | Outer skin, no handle holes | 300.00 ea |
| A-1059-AIS | Inner panel | 325.00 ea |

Coupe Roadster & Cabriolet Deck Opening Panels, Steel



| | | |
|----------|---|------------|
| A-167-A | Panel above deck lid, roadster | 250.00 ea |
| A-169-A | Deck top and side drip channels | 300.00 set |
| B-41519 | Rumble bumper brackets on front drip corners | 12.50 pr |
| A-166-A | Deck upper gutter brace, roadster | 75.00 pr |
| A-366-A | Deck upper gutter brace, coupe | 100.00 pr |
| A-162-B | Rumble hinge mount brace, roadster | 75.00 pr |
| A-162-A | Rumble hinge mount brace, coupe | 75.00 pr |
| A-160-AB | Rear corner triangle brace, roadster | 100.00 pr |
| A-360-A | Rear corner triangle brace, coupe & cabriolet | 55.00 pr |
| A-163-A | Panel below deck lid, roadster | 100.00 ea |
| A-363-A | Panel below deck lid, coupe | 100.00 ea |
| A-663-AB | Panel below deck lid, cabriolet | 70.00 ea |
| A-161-A | Inner panel below deck, rumble seat cars | 100.00 ea |
| A-161-T | Inner panel below deck, trunk lid gutter | 75.00 ea |

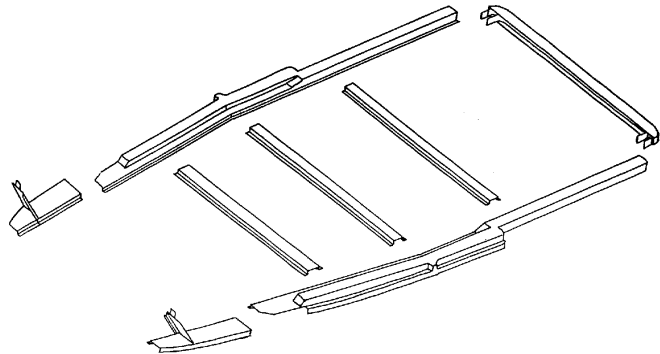
Closed Pickup Cab Panels



| | | |
|-----------|--|-----------|
| A-114-A | Cowl side panels | 200.00 pr |
| A-836-A | Door outer patch panels, 6" tall | 100.00 pr |
| A-836-AT | Door outer patch, RH, 22" tall | 105.00 ea |
| A-836-ATL | Door outer patch, LH, 22" tall | 105.00 ea |
| A-836-IA | Door inner patches | 50.00 pr |
| A-977-S | Cab quarters panels, stock | 350.00 pr |
| A-977-SL | Cab quarters panels, lengthened (12") | 450.00 pr |
| A-977-W | Cab back upper panel | 250.00 ea |
| A-977-L | Cab back lower panel | 250.00 ea |
| A-977-TH | Cab back horizontal "T" strip | 10.00 ea |
| A-977-TV | Cab back vertical "T" strips | 125.00 pr |
| A-977-VB | Cab back Inner top brace and corner brackets | 65.00 ea |

Body Floor & Subframe Repair Parts

All body floor and subframe parts are stamped/fabricated steel. They will require some adjustment, metal finishing, drilling or welding during installation.

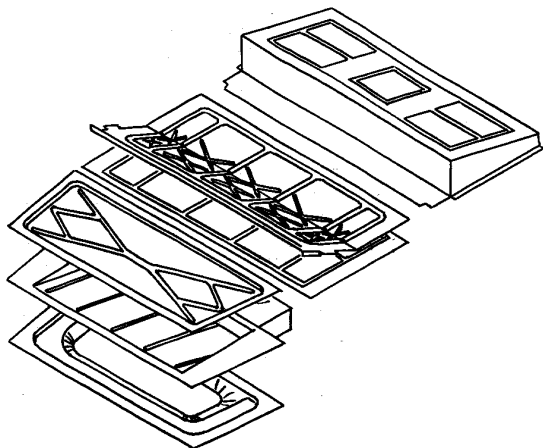


| | | |
|-----------|---|------------|
| A-132-XA | Cowl subsill/floorboard supports | 275.00 set |
| A-132-AF | Full subsills, Roadster | 350.00 pr |
| A-132-A | Half (quarter back) subsills, Roadster | 275.00 pr |
| A-332-AF | Full subsills, Coupe | 350.00 pr |
| A-332-A | Half (quarter back) subsills, Coupe | 275.00 pr |
| A-432-AF | Full subsills, Tudor sedan & Phaeton | 350.00 pr |
| A-432-A | Half (quarter back) subsills, Tudor sedan | 275.00 pr |
| A-832-AF | Full subsills, Closed Pickup Cab | 350.00 pr |
| A-1032-AF | Full subsills, Roadster pickup | 350.00 pr |
| A-131-AB | Floor support crossmembers, set of 3 | 70.00 set |
| A-165-AB | Rear body crossmember, coupe & roadster | 250.00 ea |
| A-465-AB | Rear body crossmember, tudor | 250.00 ea |
| A-1031-A | Rear body crossmember, roadster pickup | 125.00 set |
| A-831-A | Rear body crossmember, closed pickup | 65.00 ea |

* Parts with price listed as "not.avbl" are not known to be available at this time, but are listed for reference.

1928-29 Coupe, Roadster, Phaeton, Tudor, & Pickup Body Repair Parts, cont

Coupe, Roadster and Pickup Body Floor Panels



| | | |
|---------|---|-----------|
| A-335-A | Under seat pan, flat (no side curtain) Coupe, Roadster, Phaeton, Roadster PU | 75.00 ea |
| A-127-A | Under seat pan w/side curtain storage Roadster and Phaeton | 125.00 ea |
| A-835-A | Under seat pan, Closed pickup | 70.00 ea |
| A-151-A | Center floor panel, Coupe and Roadster | 100.00 ea |
| A-159-A | Trunk floor, Coupe and Roadster | 125.00 ea |

Street Rod Flat floor kit, steel

| | | |
|-----------|------------------------|------------|
| BN-281006 | Coupe, Roadster, Tudor | 350.00 kit |
|-----------|------------------------|------------|

Body Wood Kits and Metal Brackets

Wood kits are manufactured from hardwood, usually oak. Top wood kits include the wood above top of the doors, including the windshield & door header wood, when used. The body wood kits include the door post, window surround, and any other body wood below the top of the doors. Body wood kits do not include door, floor, or seat wood.

Wood Kits:

| | | |
|----------|--|-------------|
| AWD-1028 | Top wood, Standard 5 Window Coupe | 675.00 set |
| AWD-1287 | Body wood, Standard 5 Window Coupe | 675.00 set |
| AWD-1029 | Top wood, Special 5 Window Coupe | 675.00 set |
| AWD-1286 | Body wood, Special 5 Window Coupe | 1225.00 set |
| AWD-1085 | Top wood (w/header) 1928-29 Sport Coupe | 900.00 set |
| AWD-1285 | Body wood (belt rail and door posts) Sport Coupe | 625.00 ea |
| AWD-1025 | Top wood kit, Tudor | 850.00 set |
| AWD-1280 | Body wood kit, Tudor | 575.00 set |
| AWD-1033 | Top wood kit, Pickup | 675.00 set |
| AWD-1282 | Body wood kit, Pickup | 375.00 set |
| AWD-1275 | Body wood, Roadster PU | 325.00 set |
| AWD-1276 | Body wood, Roadster | 350.00 set |
| AWD-1277 | Body wood, Phaeton | 600.00 set |

Wood Support Brackets

| | | |
|-----------|---|----------|
| A-47771-A | Header side rail brackets, Coupes and Tudor | 55.00 pr |
| A-47772 | Upper cowl pillar support brackets, Coupes & Tudor | 95.00 pr |
| A-47778-A | Center bow brace, 5 Window & Tudor | 90.00 pr |
| A-47788 | Rear header side rail bracket (small), 5 Window | 17.50 ea |
| A-47790-R | Rear header side rail bracket (large), RH, 5 Window | 20.00 ea |
| A-47790-L | Rear header side rail bracket (large), LH, 5 Window | 20.00 ea |
| A-47791-R | Upper quarter window bracket, RH, 5 Window | 20.00 ea |
| A-47791-L | Upper quarter window bracket, LH, 5 Window | 20.00 ea |
| A-47792 | Lower quarter window to body seam bkt, 5 Window | 15.00 ea |
| A-47793-R | Rear corner bracket, RH, 5 Window | 25.00 ea |
| A-47793-L | Rear corner bracket, LH, 5 Window | 25.00 ea |

1929-31 Cabriolet & Fordor and Victoria Body Repair Parts

Cowl and Firewall Panels

1929 Fordor and Cabriolet cowl and firewall panels are unique to those bodies. 1930-31 Firewalls and cowl tops interchange with other 1930-31 body styles.

Patch Panels, Steel

| | | |
|-----------|--|-----------|
| A-514-A | Cowl Patch Panels, 1929 | 32.50 pr |
| A-114-B | Cowl patch panels, 1930 Fordor & Cabriolet | 60.00 pr |
| A-114-V | Cowl patch panels, Victoria & 1931 Fordor/Cabriolet | 70.00 ea |
| A-536-B | Door outer : 1929-30 (Murray body) Fordor Sedan no bead on bottom of door, set of 4 | 90.00 set |
| A-636-B | Door outer 1929-30 (Briggs) & 1931 Fordor Sedan with bead on bottom of door, set of 4 | 90.00 set |
| A-236-B | Door outer patch, Victoria & A-400 | 55.00 pr |
| A-236-IB | Door inner patch, Victoria & A-400 | 50.00 pr |
| A-581-AB1 | Wheel well patch, 1929-30 Fordor sedan & Victoria | 55.00 pr |
| A-170-ST | Body panel joint "T" strip, must form to fit | 65.00 ea |

1928-31 Wood Frame Body Door Sill Finish Bead

A metal strip that nails to the sill on the wood subframe bodies

| | | |
|---------|--|----------|
| A-132-W | 1928-31 Fordors, Cabriolets, Victoria. | 70.00 ea |
|---------|--|----------|

Body Wood Kits and Metal Brackets

Wood kits are manufactured from hardwood, usually oak. Top wood kits include the wood above top of the doors, including the windshield & door header wood, when used. The body wood kits include the door post, window surround, and any other body wood below the top of the doors. Body wood kits do not include door, floor, or seat wood.

1929-30 Fordor Sedan:

| | | |
|-------------|--|------------|
| AWD-1030-IA | Top wood, "Murray" Fordor Sedan | 1900.00 ea |
| AWD-1030-IB | Body wood, "Murray" Fordor Sedan | 3150.00 ea |
| AWD-1030-IC | Floor sill wood, "Murray" Fordor Sedan | 1550.00 ea |
| AWD-1030-ID | Door wood, "Murray" Fordor Sedan | 2350.00 ea |

1931 Fordor Sedan (slant windshield)

| | | |
|--------|---------------|------------|
| AWD-MA | Top Wood Kit | 900.00 set |
| AWD-MB | Body Wood Kit | 675.00 set |

Cabriolet

| | | |
|----------------|---|------------|
| AWD-1292 | Body wood kit, 1929-30 Cabriolet | 675.00 ea |
| AWD-1292-SILLA | Sill wood, 1929-30 Cabriolet with adjustable seat | 1550.00 ea |
| AWD-1292-SILLA | Sill wood, 1929-30 Cabriolet with fixed seat | 1550.00 ea |
| AWD-1292-SILLA | Door wood, 1929-30 Cabriolet with adjustable seat | 1550.00 ea |
| AWD-1292-DA | Door wood, 1929 (68A) Cabriolet | 1300.00 ea |
| AWD-1292-DBW | Door wood, 1930 Cabriolet with wood window mount | 1300.00 ea |
| AWD-1292-DBM | Door wood, 1930 Cabriolet with metal window mount | 725.00 ea |
| AWD-1293 | Body wood, 1931 Slant windshield cabriolet | 700.00 set |

Floor Sheetmetal Panels

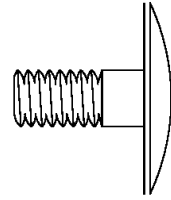
| | | |
|----------|--|-----------|
| A-559 | Under front seat pan, fordor sedan | 85.00 ea |
| A-551-M | Center pan, Murray fordor | 160.00 ea |
| A-551-B | Center pan, Briggs fordor | 160.00 ea |
| A-255-V | Under rear seat floor pan w/o hump, Vicky | 100.00 ea |
| A-555-B | Under rear seat floor pan w/o hump, Briggs | 160.00 ea |
| A-555-M | Under rear seat floor pan w/o hump, Murray | 100.00 ea |
| A-458-AB | Under rear seat crossmember hump, sedans | 40.00 ea |

* Parts with price listed as "not.avbl" are not known to be available at this time, but are listed for reference.

Special Hardware

Rear Wheelwell Fender Studs

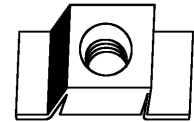
These are the large head studs that weld into the wheelwell for rear fender mounting on 1928-32 Passenger cars and 1932-47 Pickup boxes.



| | | | |
|---------|----------|------|-----|
| AH-1173 | Set of 4 | 2.50 | set |
|---------|----------|------|-----|

Cage Nuts

A nut in a sheetmetal cage to weld or braze into the body.



| | | | |
|-----------|-------|------|----|
| AH-3145-B | 43834 | 1.50 | ea |
| AH-3145 | 45428 | 1.50 | ea |
| AH-3145-D | 45359 | 5.00 | ea |
| AH-3145-E | 41276 | 2.50 | ea |

Capped nuts for exposed wood

Stainless Steel, used extensively on station wagons

| | | | |
|--------------|--|------|----|
| AH-352353-SF | 5/16-24, .75 cap dia, .35 thread depth | 3.00 | ea |
| AH-352353-LL | 5/16-18, .75 cap dia, .60 thread depth | 3.00 | ea |
| AH-352353-SS | 5/16-18, .75 cap dia, .35 thread depth | 3.00 | ea |
| AH-352353-SC | 3/8-24, .90 cap dia, .60 thread depth | 3.00 | ea |

"D" Nuts

These are the special D shaped clinch nuts used extensively on Ford bodies. They are inserted into their hole and the flange is peened down to rivet them into the hole.



| | | | |
|-----------|-------|------|----|
| AH-1123-A | 11963 | 0.50 | ea |
| AH-1123 | 40901 | 0.50 | ea |
| AH-1123-B | 43834 | 1.00 | ea |
| AH-1123-D | 45428 | 2.50 | ea |
| AH-1123-C | 45359 | 2.50 | ea |
| AH-1123-E | 44028 | 2.50 | ea |

Body Nails

.074 dia x 3/4", .165 dia, Oval head, straight shank

| | | | |
|------------|---------|------|----|
| AH-0003-C | 100 qty | 1.50 | ea |
| AH-0003-5C | 500 qty | 7.50 | ea |

.085 dia x 7/8", .165 dia, flat head, twist shank

| | | | |
|------------|---------|-------|----|
| AH-0004-C | 100 qty | 2.00 | ea |
| AH-0004-5C | 500 qty | 12.50 | ea |

Body Insulation

| | | | |
|-----------|---------------------------------------|-------|----|
| HR-700770 | Heavy duty foil backed jute 36" x 48" | 30.00 | ea |
|-----------|---------------------------------------|-------|----|

* Parts with price listed as "not.avbl" are not known to be available at this time, but are listed for reference.