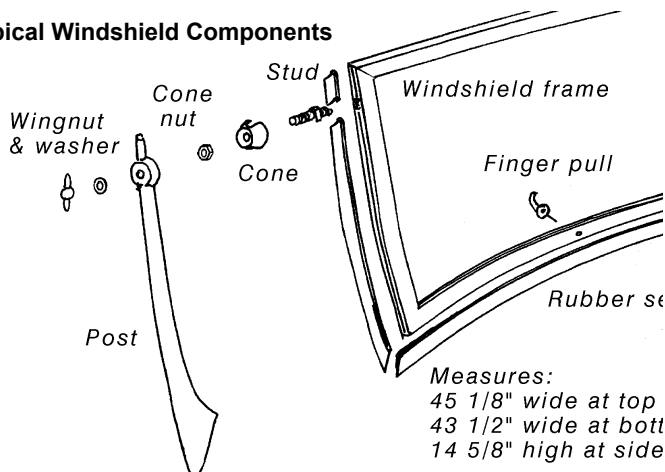


## 1935-36 Roadster and Phaeton Windshield and Top

### Typical Windshield Components



### Windshield Frame Kits

Windshield frame only, features step design similar to original, front face of frame is slightly larger than inner face. Rubber seal, cones, studs and cone nuts are NOT included. Available with stock holes drilled for wiper shaft and finger pulls or undrilled. Available plain or chrome plated.

	Stock Height		Chopped 2"	
Chrome, stock holes	48-37110	1100.00 ea	48-37110-C2	1100.00 ea
Chrome, no holes	48-37110-N	1100.00 ea	48-37110-CN2	1100.00 ea
Plain, stock holes	48-37110-P	600.00 ea	48-37110-P2	600.00 ea
Plain, no holes	48-37110-NP	600.00 ea	48-37110-PN2	600.00 ea

### Windshield Posts



Excellent quality. (We made our own tooling) cast gear bronze posts. Drilled for mounting. Optionally available drilled for windwings only or windwings and top side curtain stud holes.

	Stock Height		Chopped 2"	
35 Chrome ww + side	48-711210-SA	1350.00 pr	48-711210-2SA	1350.00 pr
35 Plain ww + side	48-711210-BA	950.00 pr	48-711210-2BA	950.00 pr
36 Chrome ww + side	68-711210-SA	1350.00 pr	68-711210-2SA	1350.00 pr
36 Plain ww + side	68-711210-BA	950.00 pr	68-711210-2BA	950.00 pr
35 Chrome ww no side	48-711210-SB	1350.00 pr	48-711210-2SB	1350.00 pr
35 Plain ww no side	48-711210-BB	950.00 pr	48-711210-2BB	950.00 pr
36 Chrome ww no side	68-711210-SB	1350.00 pr	68-711210-2SB	1350.00 pr
36 Plain ww no side	68-711210-BB	950.00 pr	68-711210-2BB	950.00 pr
35-36 Chrome no holes	48-711210-SC	1350.00 pr	48-711210-2SC	1350.00 pr
35-36 Plain no holes	48-711210-BC	950.00 pr	48-711210-2BC	950.00 pr

### Windshield Post Pads

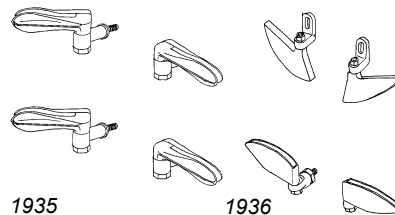
48-37132-S	Windshield post to body pads, rubber	12.50 pr
------------	--------------------------------------	----------

### Windshield Hardware

A-351000	Wingnut, chrome plated (2 required)	10.00 ea
A-351001-SW	Wingnut washer, stainless (2 required)	2.50 ea
18-37118-S	Finger pulls, chrome	15.00 pr
40-37154-NC	Cone, fits step design steel repro frames, stainless	75.00 ea
40-37158-S	Stud (3/8-24 x 5/16-24) & cone nut set	12.50 ea
A-37199-BS	Rubber seal, Fits reproduction steel frame	17.50 ea

### Windwing Brackets

Windwings act as side air deflectors on Roadster and Phaeton windshields. They mount to the back side of windshield posts.



A-18200-B	1935, Chrome Plated, set of 4	150.00 set
68-18200	1936, Stainless, set of 4	475.00 set

### DuVal Style Windshield Frames

Cast silicon bronze windshield frame is assembled and ready to mount to cowl. Mounting hardware is included. Duval style frames are unplated.



48-37110-DUV	1935-36 Roadster & Phaeton	3000.00 ea
--------------	----------------------------	------------

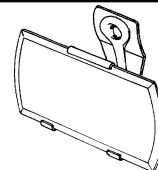
### Windshield Center Mirrors

#### Beveled mirror w/chrome bracket

40-17681 50.00 ea

#### Accessory glass w/stainless trim

B-17681-SG 50.00 ea



### Roadster & Phaeton Windwing Mirrors

B-17700-WWSS Any Year, Chromed, clamps to windwing not.avbl

### Door Hinge Mirrors

Mirror: Chrome arm w/stainless head back

Curved arm (Passenger), RH or LH

48-17741 75.00 ea

Straight arm (Pickup), RH or LH

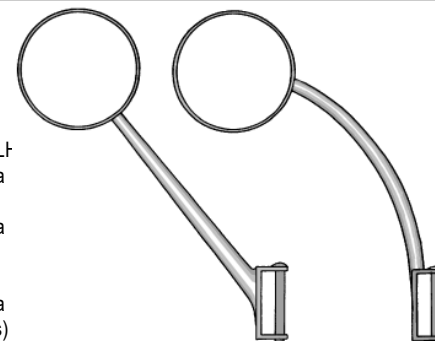
50-17741 75.00 ea

Replacement head (flat glass)

B-17741-MH 22.50 ea

Replacement head (convex glass)

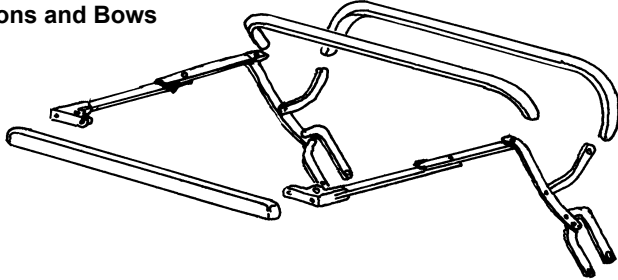
B-17741-MHC 20.00 ea



\* Parts with price listed as "not.avbl" are not known to be available at this time, but are listed for reference.

**1935-36 Roadster and Phaeton  
Windshield and Top, cont**

**1935-36 Roadster  
Top Irons and Bows**



48-42030-S	Top irons, stainless, w/ steel center bow	not.avbl
48-42030-S2	Top irons, 2" chop, stnless, w/steel center bow	not.avbl
48-42055-1	Top wood header, oak	600.00 ea
48-42055-3	Top rear bow, oak	550.00 ea
40-42030-MB	Top iron to body shoulder bolt set	35.00 set

**1935-36 Phaeton Top Irons and Bows**

48-38700-S	Top irons, stainless	not.avbl
48-42055-1	Top wood header, oak	600.00 ea
48-37455-3	Top # 3 bow, oak	400.00 ea
48-37455-4	Top # 4 (rear) bow, oak	500.00 ea
B-37708-B	Top iron to body nut, stainless clad	7.50 ea

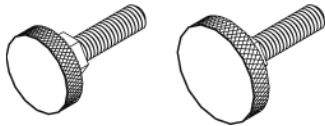
**1935-36 Roadster and Phaeton Top Corner Brackets**

*Cast bronze, machined, nice reproduction of the original. Most reproduction top irons use a fabricated corner bracket.*

48-714992-S	plain	250.00 pr
48-714992-SC	Chrome	450.00 pr

**Top Iron to Windshield Post  
Thumbscrews**

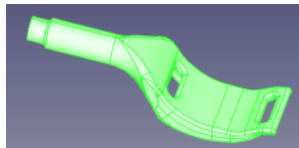
*Chrome Plated  
5/16-18 thread*



48-7650820	1935, 1" dia	25.00 ea
68-7650820	1936, 1 1/4" dia	30.00 ea

**1935-36 Phaeton Saddle**

*Cast bronze, Chrome, machined, nice reproduction of the original. This is the part that screws into the body for the top to rest on*



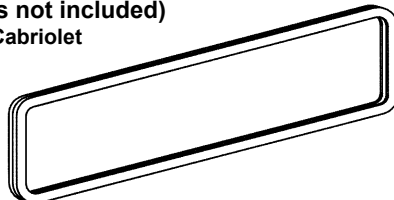
48-755408 .soon

**Side Curtain Parts**

A-180620	Side curtain socket in door, chrome plated	17.50 ea
A-81002	Snap sockets, 1928-37 (in body)	10.00 ea
A-37103	Studs, 1928-36 (for windshield)	45.00 set

**Back Window Frames (glass not included)**

**1935-36 Roadster, Phaeton, & Cabriolet  
(24 "x 6 7/8" od)**



48-37639-PL	Stainless outer/tan inner	not.avbl
-------------	---------------------------	----------

\* Parts with price listed as "not.avbl" are not known to be available at this time, but are listed for reference.